

2022, June 15th

Welcome to



## Who we are

The Vado Gateway Terminal opened on 12 December 2019 and is fully integrated with the existing Reefer Terminal.

Vado Gateway is the first semi-automated port in Italy with a fully-automated gate and stacking yard.

The 16.5 depth berth at Vado Gateway can accommodate the latest Ultra Large Container Vessels (ULCVs).





# Our values

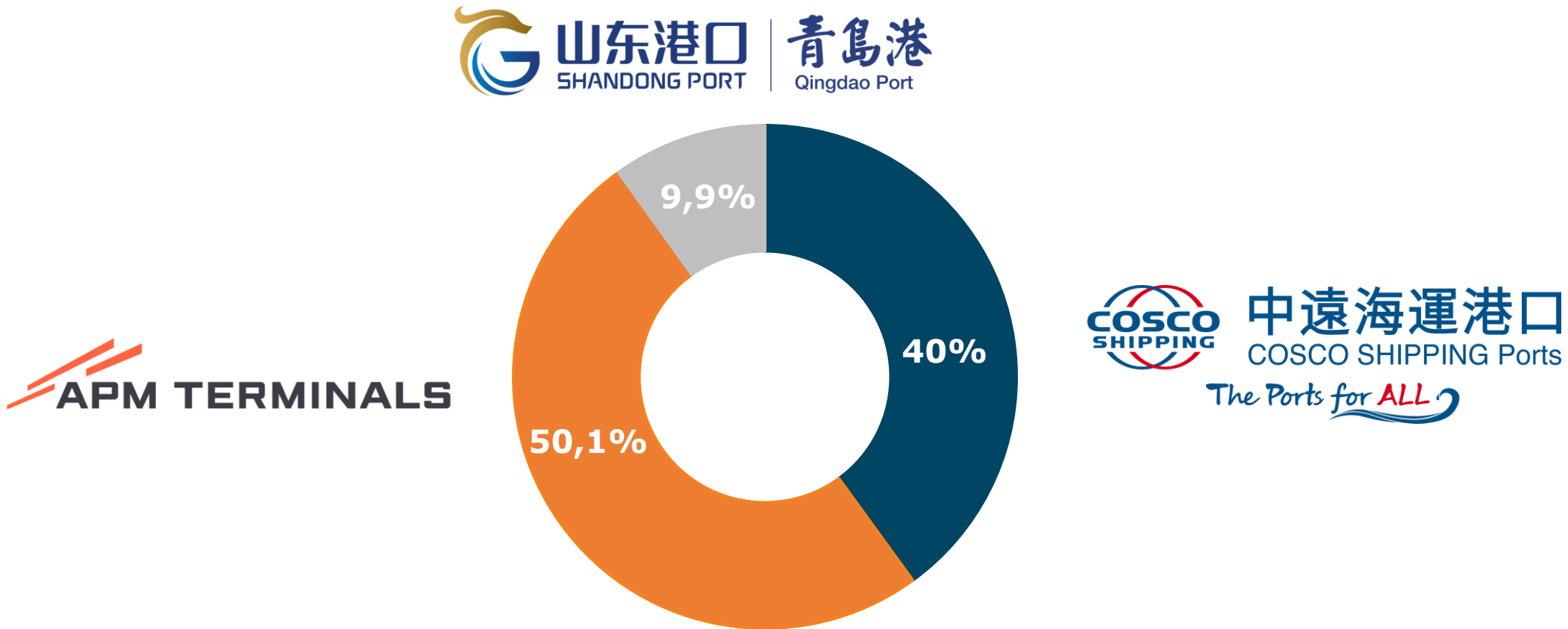
As Italy's fastest and **most advanced gateway** for growth, we offer you the easiest and **most efficient connection** from the Mediterranean hinterland to the rest of the world – we serve as an **accelerator for business growth**.

With our **integrated facilities, state-of-the-art technology** and always-on **team of experts** we are able to offer connectivity, flexibility and speed – while maintaining high-cost efficiency and pace.

Being a semi-automated terminal with a **low CO2-footprint** – we also set the pace for innovation and sustainability in the regional industry.



WHO WE ARE – JOINT VENTURE



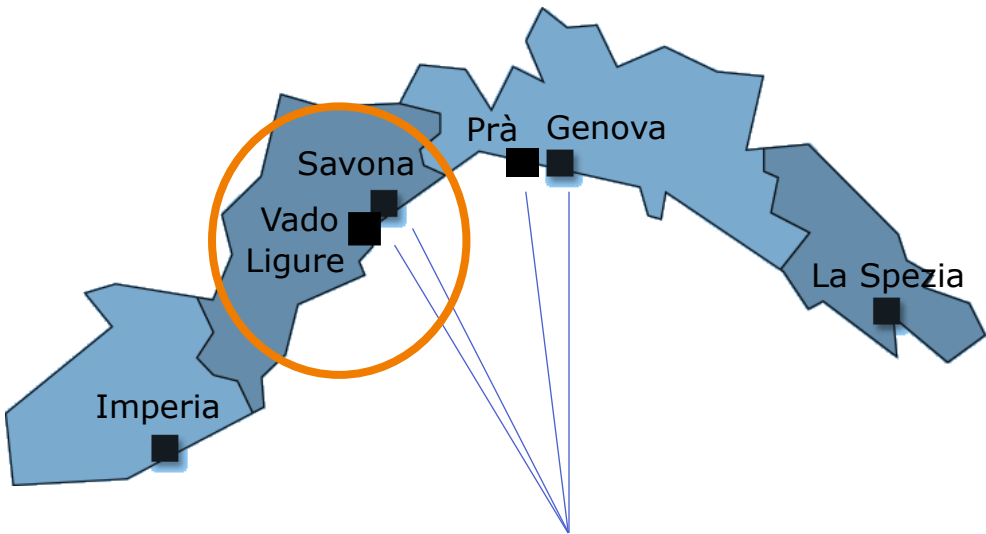
«A Joint Venture among giants»



An aerial photograph of a large port terminal. The foreground is filled with numerous stacks of colorful shipping containers (red, blue, white, and yellow) arranged in neat rows. Several large blue gantry cranes are positioned along the waterfront, ready for loading and unloading. In the background, there are industrial buildings, a parking lot, and a small town nestled at the foot of a steep, green hill. The sea is visible on the left side of the image.

# OUR TERMINALS

OUR TERMINALS - LOCATION





## OUR TERMINALS – Ports of Savona and Vado Ligure



Vado Gateway

Port of Savona  
Multipurpose

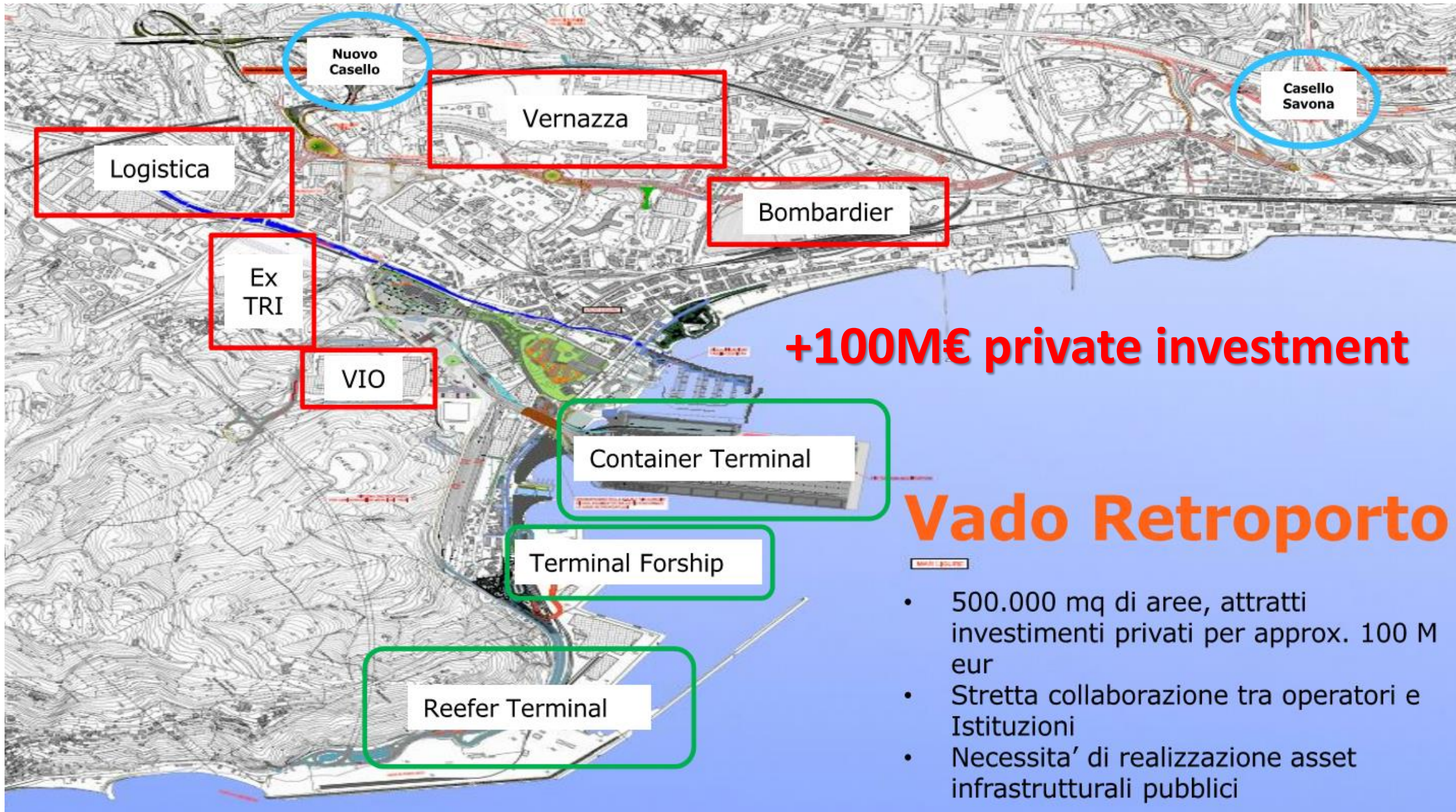


This aerial photograph shows the Port of Savona, Italy, with numerous industrial and commercial facilities labeled. The port is situated along the Ligurian Sea, with the city of Savona visible in the background. The labels identify various terminals, shipyards, and storage areas, including:

- AUTOSTRADA** (Autosole)
- COSTA CROCIERE** (Crociere, Calata delle Vele, Banchina Don Genta)
- SAVONA TERMINALS** (Merci convenzionali, prodotti siderurgici)
- PALUMBO SUPERYACHTS** (Cantiere navale)
- MONFER** (Rinfuse solide e liquide, cereali/oli vegetali)
- COLACEM** (Rinfuse solide, cereali/cemento)
- BUZZI UNICEM** (Rinfuse solide, cemento)
- SAVONA TERMINALS** (Rinfuse solide)
- AZIMUT YACHTS** (Cantiere navale)
- SAVONA TERMINAL AUTO** (Merci convenzionali, autoveicoli/Ro-Ro)
- DEPOSITI COSTIERI** (Rinfuse liquide, vino/oli vegetali)
- SAVONA TERMINALS** (Merci convenzionali, cellulosa/legname)
- TERMINAL RINFUSE ALTI FONDALI** (Rinfuse solide, carbone)
- W. SERVICE** (Cantiere navale)
- BuT** (Rinfuse solide)
- FERROVIA** (Railway)
- Darsena Nuova** (Shipyard)
- Darsena Alti Fondali** (Shipyard)
- MLM** (Terminal)
- T1, T2, T3, T4** (Terminals)
- 32 nord, 32 sud, 33 rampa** (Quays)
- 34** (Quay)

# Il porto di Savona





Nuovo Casello

Vernazza

Casello Savona

Logistica

Bombardier

Ex TRI

VIO

**+100M€ private investment**

Container Terminal

Terminal Forship

Reefer Terminal

## Vado Retroporto

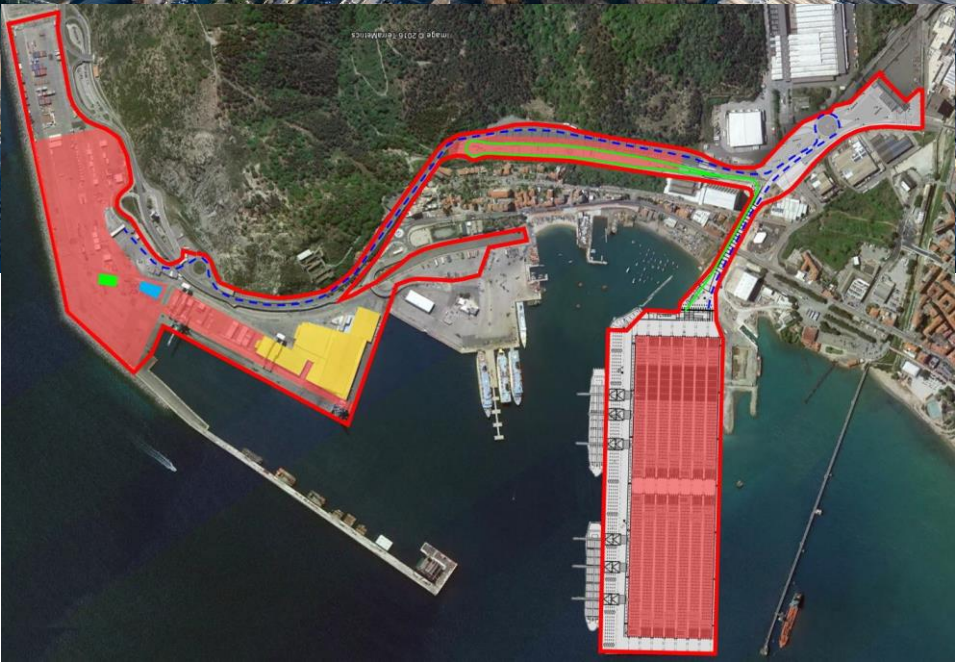
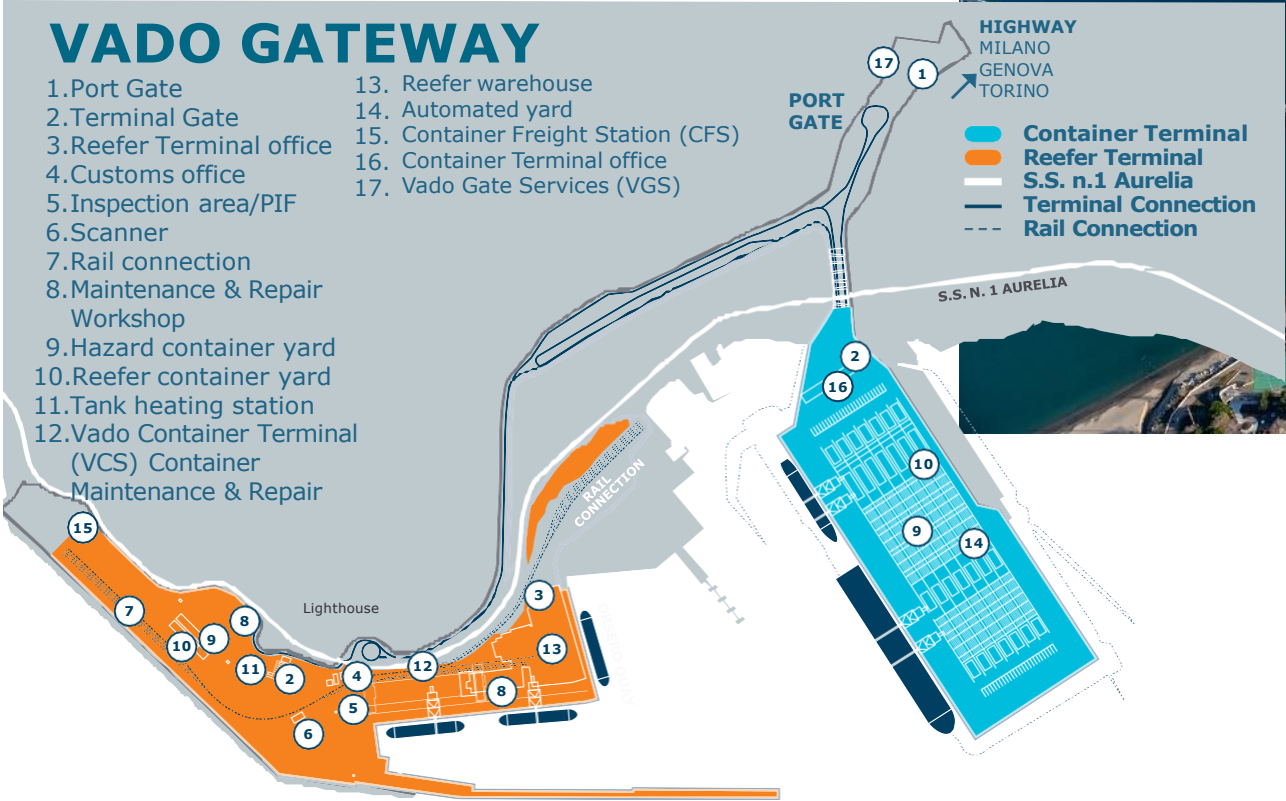
- 500.000 mq di aree, attratti investimenti privati per approx. 100 M eur
- Stretta collaborazione tra operatori e Istituzioni
- Necessita' di realizzazione asset infrastrutturali pubblici



# OUR TERMINALS - LOCATION

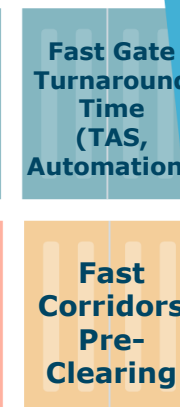
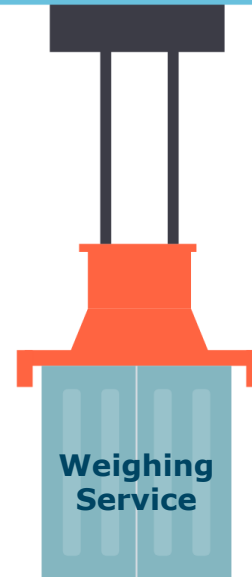
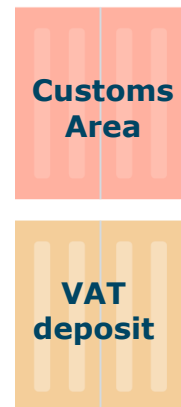
Reefer Terminal

Container Terminal





## WHAT WE CAN OFFER YOU?



## OUR TERMINALS - CAPACITY











- ✓ 14 mtrs net draft
- ✓ 2 ro-ro quays
- ✓ Refrigerated Warehouse



- ✓ 16.5 mtrs net draft
- ✓ 700 mtrs quay
- ✓ Easy nautical access

# OUR TERMINALS - CAPACITY

		REEFER TERMINAL	CONTAINER TERMINAL	Total
	Length (mts)	470   200   240	700	1610
	Cargo Type	Container/ Fruit   Ro-Ro   Fruit	Container	Multipurpose
	Quay Cranes	2	4	6
	Design Capacity	250 000 TEUs	900 000 TEUs	1 150 000 TEUs
	Warehouse Capacity	600 000 tons/ 10 000 plts slots (15 cells -2°C/+14°C)	/	600 000 tons/plts
	Yard Equipment	2 RMG   6 RS	14 ARMG   19 SC	/
	Gate Lanes	8	14	/
	Reefer plugs	530	900	1430



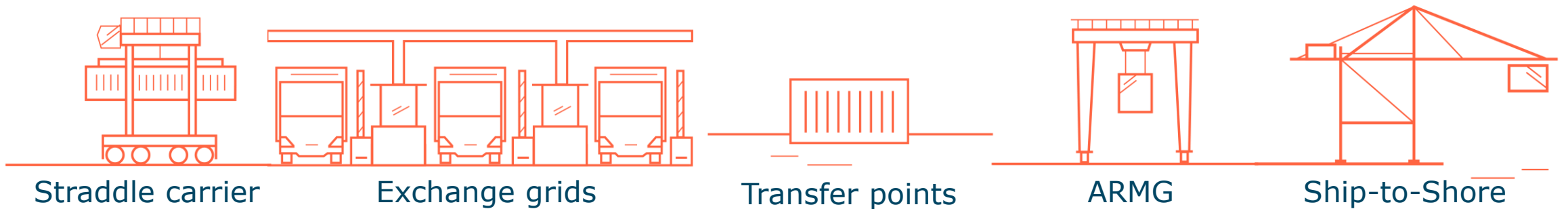


VADO GATEWAY

VADO GATEWAY



# VADO GATEWAY - LAYOUT





## 2. First semi - automated Terminal & fully automated gate in Italy

- 14 reversible lanes
- 'Truck-Turnaround Time' target of 30 mins (45 mins in peaks)
- Truck appointment system to facilitate flows
- "Pit-stop" principle
- Container number ID/ISO code recognition
- Container Seal/IMO labels presence
- Interface with Terminal Operating System





An aerial photograph of a port terminal. Two large gantry cranes with red and white striped vertical sections are prominent. The terminal is filled with stacks of white and yellow containers, many of which are labeled 'MAERSK'. In the background, a lighthouse sits on a small island in the water, and a steep, rocky hill rises behind the port. The sky is overcast.

**REEFER TERMINAL** //

**REEFER TERMINAL** //



# REEFER TERMINAL - LAYOUT



REEFER TERMINAL



Rail area



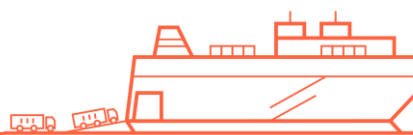
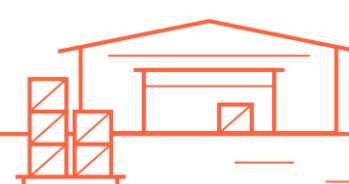
Customs and veterinary  
inspections



M&R area



Refrigerate warehouse in the terminal



Orsero, Main and Ro-ro  
quay



## Largest Fruit Port Hub in Mediterranean

- 15 cells (500 sqms each) -2°C to +14°C
- 600.000 pallets/tons capacity
- AEO certified
- Authorized for biological fruit





## Special Cargo handling

- Breakbulk
- Staffing
- Stripping
- OOG







# OUR TERMINALS' PERFORMANCES



# OUR PERFORMANCES – CONTAINER AND REEFER TERMINAL CONNECTIVITY

- **Trains from/To:**

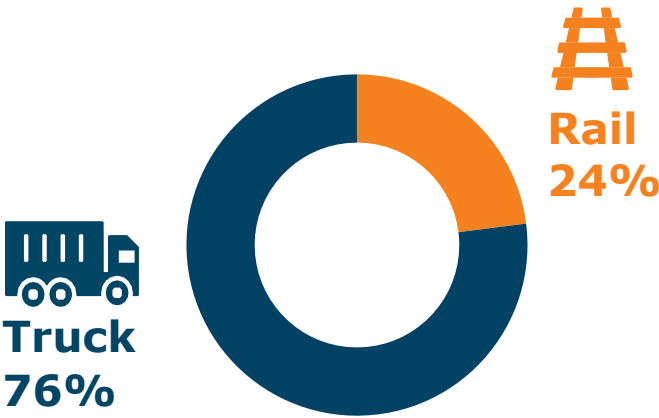
- ✓ Milan
- ✓ Rubiera
- ✓ Padua
- ✓ Piacenza

- **On-dock rail terminal**

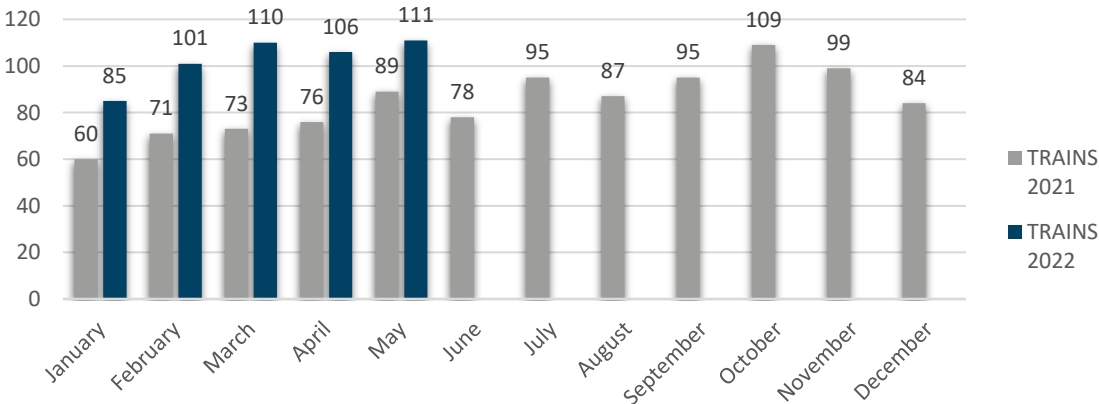
- **Intermodal ratios:**

- ✓ Genoa 18%
- ✓ La Spezia 34%
- ✓ Vado target 40%

- **Vado Z.I. Station + Parco Doria**  
**Station future upgrade to 750 mtrs rail tracks**



**NUMBER OF TRAINS** 



# OUR PERFORMANCES – CONTAINER TERMINAL TIMING



## Unique Fully Automated Gate in Italy, safety and efficiency improved compared to the traditional Italian terminal gates set-up

- ✓ Container Code recognition
- ✓ Container Seal/IMO placard presence
- ✓ Container images system
- ✓ Interface with Terminal Operating System



## Truck Appointment System:

- ✓ Easy to use
- ✓ Facilitates Trucking Companies deployment planning
- ✓ Allows very fast Turnaround Time



## Pit-stop principle

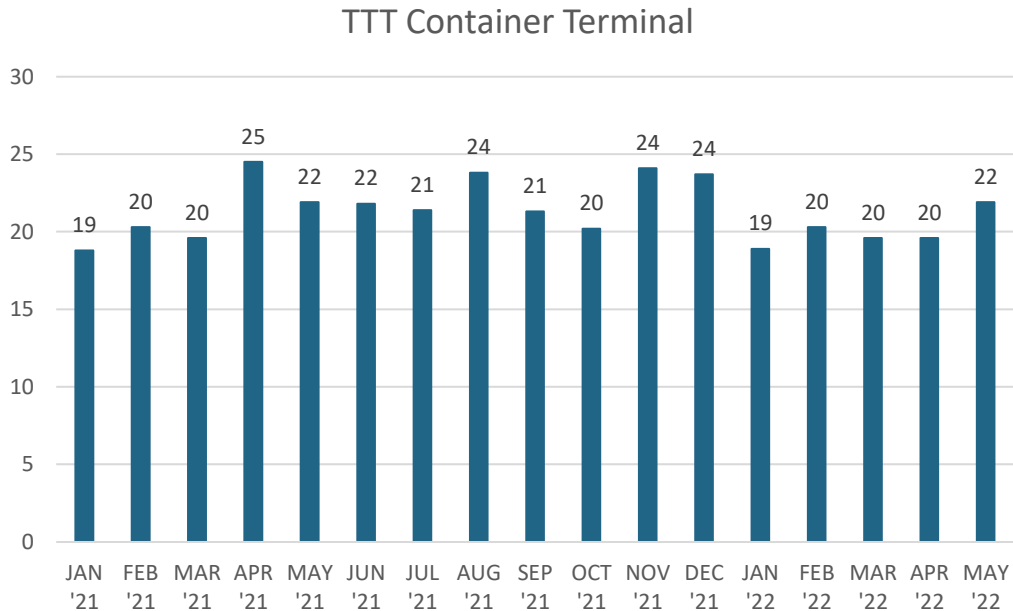


## VGS (Vado Gate Services) – Dedicated assistance to our customers outside the gate:

- ✓ Documentation handling
- ✓ Trouble shooting area

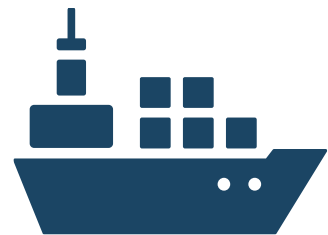


## FAST TURNAROUND TIME (target 30-45 min)





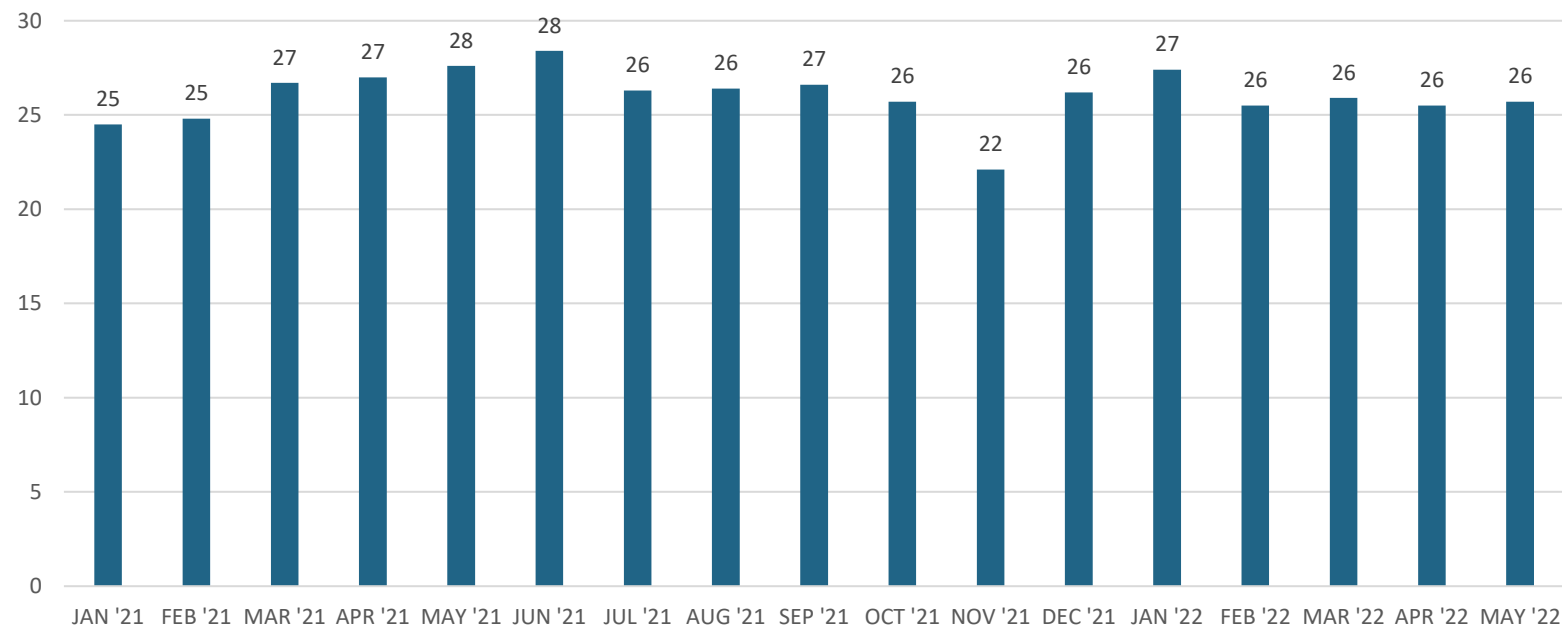
# OUR PERFORMANCES – CONTAINER TERMINAL PRODUCTIVITY



## A STRONG TERMINAL PRODUCTIVITY

- High terminal productivity supports vessel schedules and Line’s reliability
- GMPH aligned with 2021 target

GROSS MOVES PER HOUR  
CT



WE IMPROVE THE CUSTOMER EXPERIENCE  
THROUGH OUR

- SPEED
- ACCURACY
- RELIABILITY

YTD 2022 Net Promoter  
Score (NPS)



[18]

**Landside  
customer**



[40]

**Shipping Line**

Voice Of Customers

*"In less than 2 years  
and  
under covid emergency  
this terminal exceeded  
biggest and most  
experienced  
competitors. In 5 years  
and with proper  
infrastructure it will be  
the new benchmark for  
the market"*

*"We are satisfied  
of Vado Gateway  
performances,  
which are  
beyond  
expectations in  
terms of service  
quality granted."*

*"We have recently  
re-routed volumes  
to Vado Ligure to  
benefit of a  
reduced transit  
time and of a good  
rail service."*

*"Satisfied by  
truck terminal  
turnaround time  
and operations  
at gate."*



Safety for Life

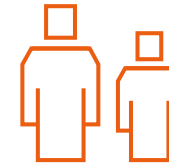


## Safety & Security as license to operate

- ISO 14001 Certification for Environmental Management System
- ISO 45001 Certification for Safety Management System
- Focus on Sustainability by Stakeholders Engagement Project
- Go-Green policy for Environment Protection



We protect:



Human lives



The environment



Your assets



# **FUTURE DEVELOPMENTS**

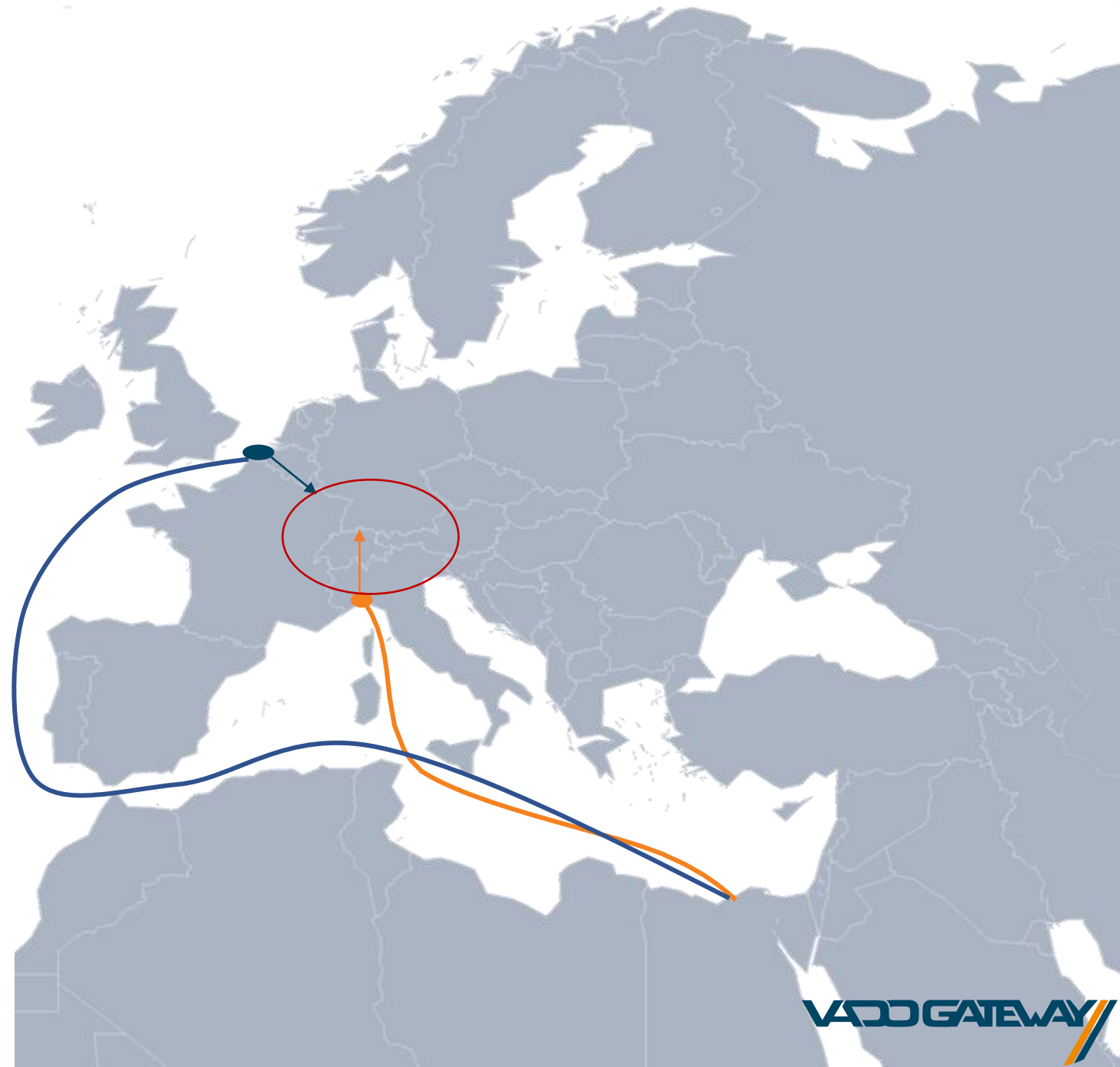


# FUTURE DEVELOPMENTS – OUR MARKET

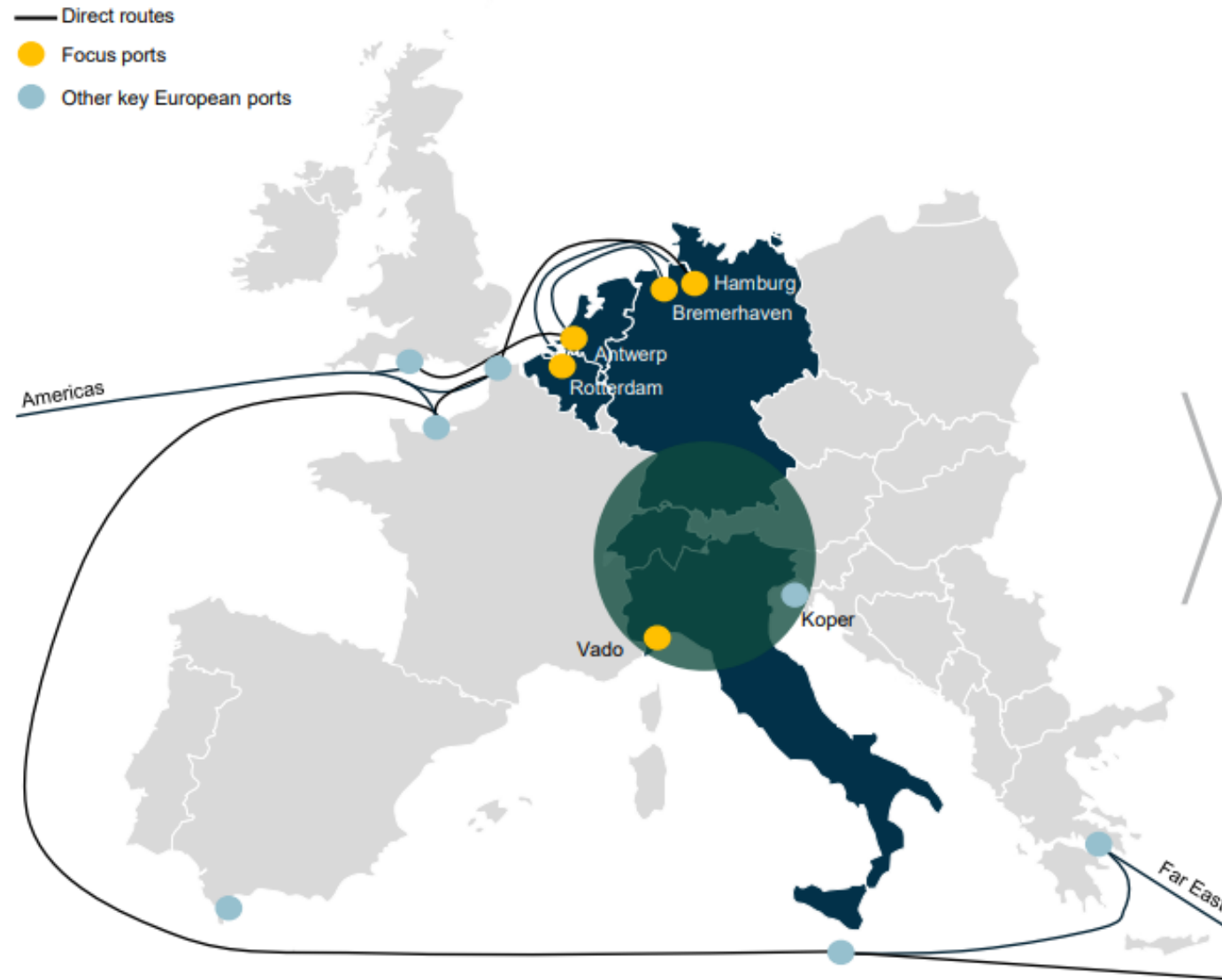
- **A 70M consumers' market:**

- ✓ North Italy,
- ✓ Switzerland,
- ✓ South Germany

- **Gotthard pass:** an opportunity to connect faster Central European markets



# OUR MARKET – Potential catchment area

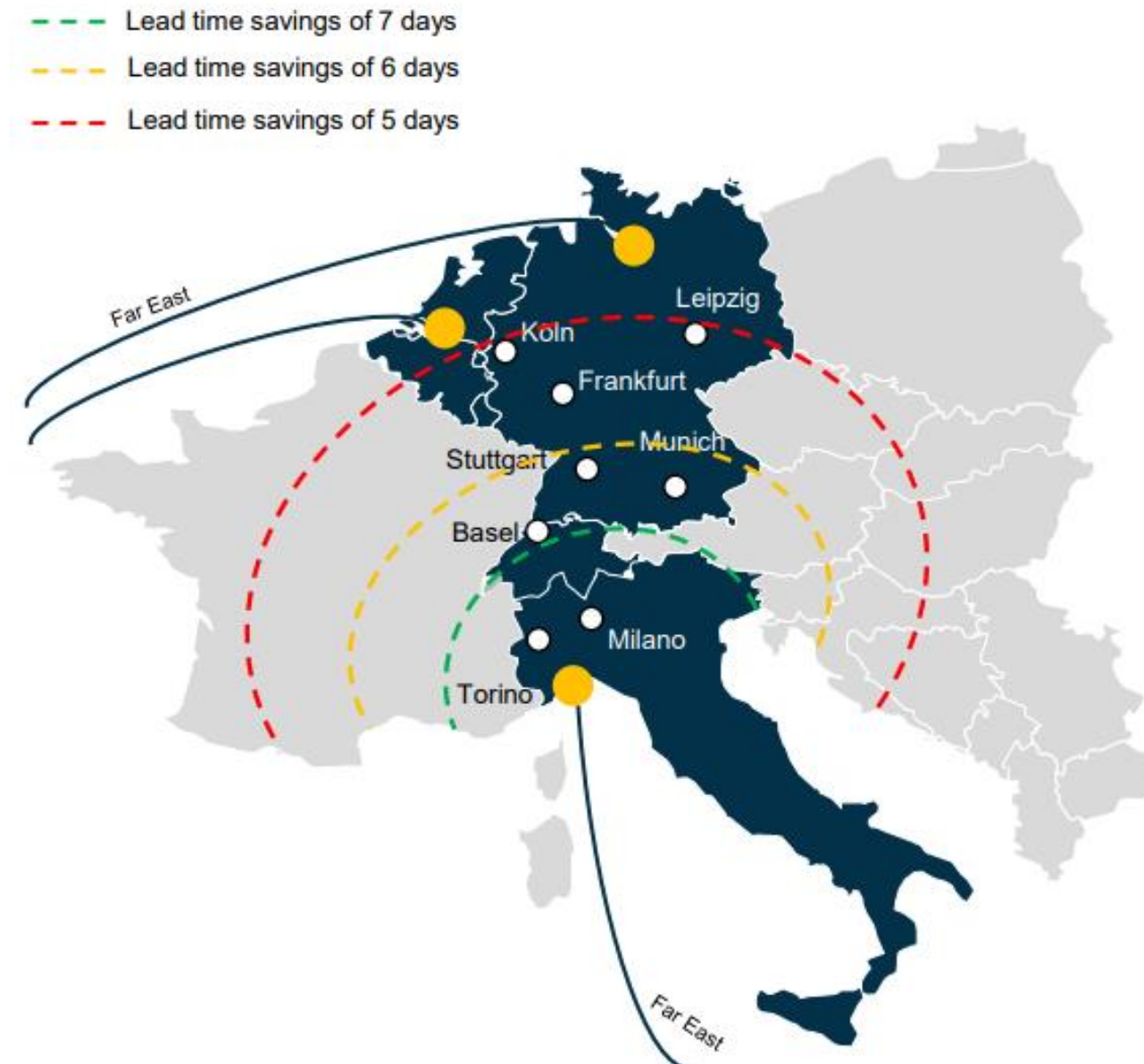


## Key takeaways

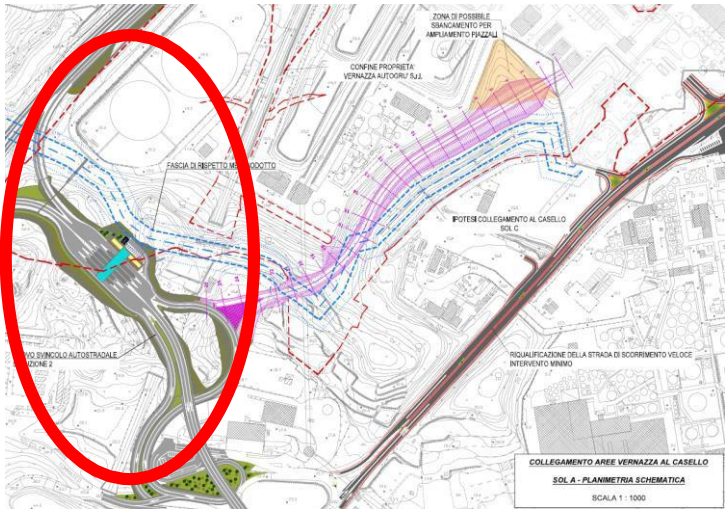
- The potential catchment area for the Ligurian ports is defined as **Southern Germany, Switzerland and Northern Italy** due to the geographical proximity that these areas have to the Ligurian ports\*.
- Further, when looking at inland connectivity the Ligurian area is connected to the catchment area via TEN-t corridors similar to the Northern Range Port (see Appendix A).
- The area is referred to as the "blue banana", a geographic area within Europe known for high productivity and corresponding large trade volumes.
- Today, most containers going to/from this area, pass through Northern Range Ports on their way to/from either the Far East or Americas.
- Austria is not included in the analysis due to its proximity to the Port of Koper. Research shows that Koper is the main port of choice for Austria when routing cargo via Southern Europe.



## OUR MARKET – Transit time saving



NEW TOLLGATE BOSSARINO



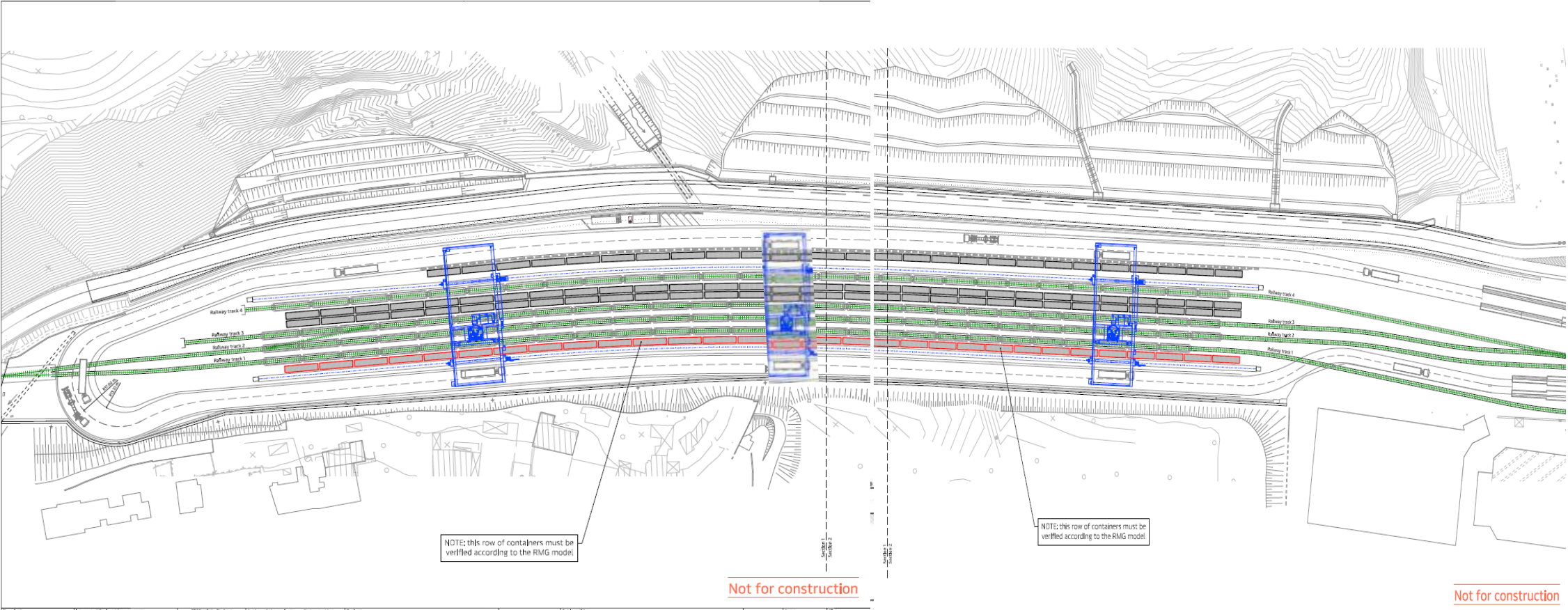


# FUTURE DEVELOPMENTS – RAIL



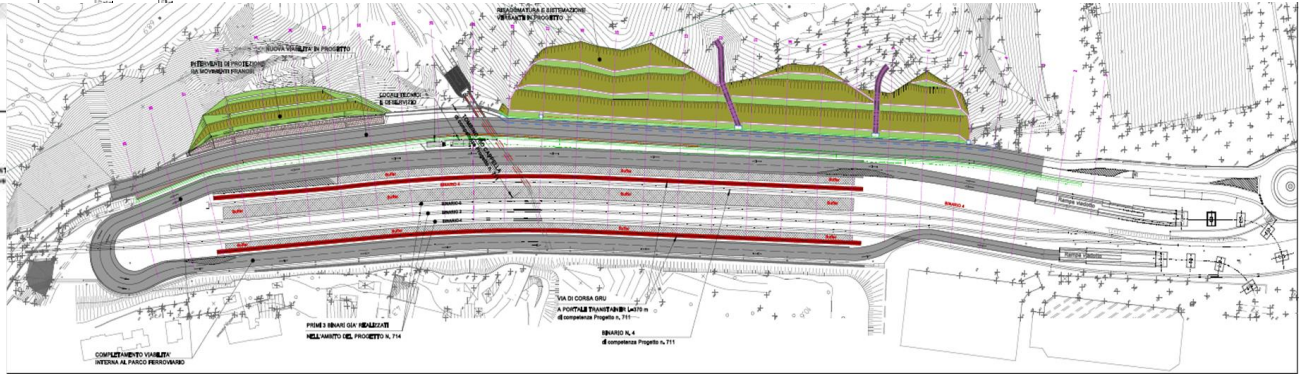
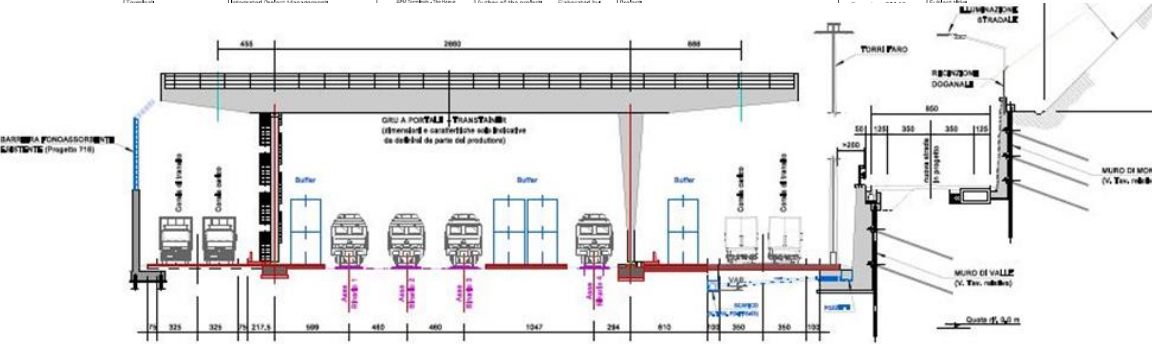


# Rail Ramp - buffer area



Not for construction

Not for construction







As part of the [A. P. Moller-Maersk](#) group we have committed to [Net Zero Greenhouse Emissions by 2040](#).

We have also committed to a [70% reduction in absolute \(total\) emissions as an interim milestone for the period 2020-2030](#). This is the most ambitious target set by any terminal operator to date. To meet this commitment, [we are working hard to achieve zero-emission container handling services](#), without using carbon offsetting. Instead, we are utilizing technologies in our terminals to deliver [zero-emission container handling services](#).

The Net Zero criteria use the Science Based Targets initiative (SBTi) pathway to limit global warming to 1.5°C. They include a societal commitment to act now and drive material impact in this decade, and a commitment to deliver net zero supply chains to customers by 2040.

# QUESTIONS?







Follow us on Facebook



Subscribe to our Newsletter



