

ITALIAN CUSTOMS

INTERREGIONAL DIRECTORATE OF LIGURIA, PIEDMONT, AND AOSTA VALLEY



LA SPEZIA CUSTOMS OFFICE

La Spezia, 03 settembre 2015

CUSTOMS AUTHORITIES

EXERCISING CONTROL ACTIVITIES

IN RESPECT OF TRADE IN GOODS, MOVEMENT OF
PEOPLE, VALUE OF GOODS FOR CUSTOMS PURPOSE



CUSTOMS OFFICE IN LA SPEZIA HARBOUR



SOME DATA...

ORGANIZATION CHART

DIRETTORE INTERREGIONALE AD INTERIM
Franco Letrari
IL DELEGATO PER L'UFFICIO DELLA SPEZIA
Elvio La Tassa

ORGANIZATION CHART

AUDIT INTERNO - ramo dogane
FIORIBELLO ROBERTO

AUDIT INTERNO - ramo accise
CARROZZA GIANCARLO

STAFF e AA.GG.
MACCIANTELLI OTTAVIANO

AREA GESTIONE CONTENZIOSO
DOLCINO ANDREA

AREA GESTIONE TRIBUTI
RUGGIERO DOMENICO

AREA VERIFICHE E CONTROLLI
SANSONE ROSALIA RITA

AREA ASSISTENZA E INFORMAZIONE
AGLI UTENTI
SISTI PAOLA

UFFICIO GESTIONE PROCESSI
INFORMATIZZATI
LA ROCCA CORRADO

UFFICIO GESTIONE PRATICHE
AMMINISTRATIVE E PENALI
LUPI PATRIZIA

UFFICIO ACQUISIZIONI ED
APPURAMENTI
CAPORASO FRANCESCO

UFFICIO CONTROLLI CONCOMITANTI
DI GIOIA ANGELO

UFFICIO GESTIONE MAGAZZINI E
SEMPLIFICAZIONI
DE FILIPPO ANTONIO

UFFICIO RAPPORTI N.A.T.O. E
GESTIONE LICENZE ARMAMENTI
BERTOZZI SILVIA

UFFICIO MONITORAGGIO
COSTANTINO SILVIA

UFFICIO TUTELA INTERESSI UE
BARONE GIOVANNI

UFFICIO CANALE VERDE
FERRARA FELICE

UFFICIO RIMBORSI
CHIAPPINI GIANLUCA

UFFICIO PROCEDURE DOGANALI,
AUTORIZZAZIONI E GESTIONE
PARTICHE NOS
BORRINI STEFANIA

UFFICIO LEGALE
MIDURI ROSARIA

UFFICIO CONTABILITA'
PELLUZZA LOREDANA

UFFICIO VERIFICHE AZIENDALI RAMO
DOGANE ED IVA
GIACCHE' FRANCO

SERVIZIO PROTOCOLLO
GALLIGANI MIRELLA

UFFICIO REVISIONI
CORRADETTI MAURO

UFFICIO ANTIFRODE
PITTALUGA FRANCESCO

UFFICIO RAPPORTI ISTITUZIONALI E
SINDACALI, FORMAZIONE E
COMUNICAZIONE
UNGHIERI MARIA PAOLA

UFFICIO ADEMPIMENTI PRELIMINARI
BINACO ANGELO

SEZIONE POLIZIA GIUDIZIARIA
ZANELLI CHRISTIAN

UFFICIO GESTIONE ECONOMICA
BECCARI CHIARA

UFFICIO SETTORE ACCISE
DIAN STEFANO

SERVIZI ANALISI DEI RISCHI
PERAZZO MANUELA

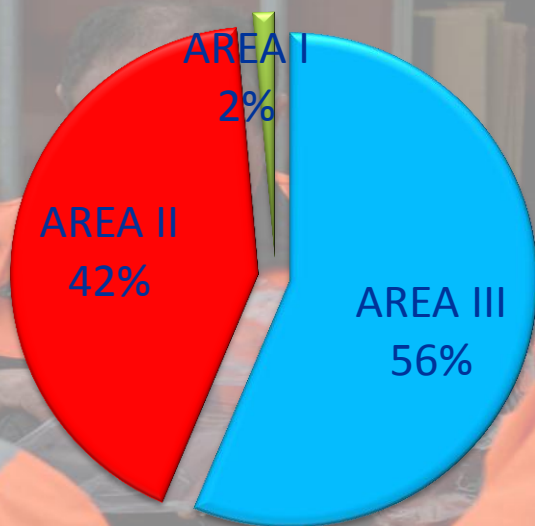
UFFICIO GESTIONE RISORSE UMANE,
ECONOMATO E VALUTAZIONE DEL
CARABELLO' GRAZIA

SERVIZIO ACCERTAMENTI
RISCOLO ALBERTO

SERVIZIO M.C.S.I. metodologia e
controllo degli scambi internazionali
VIGLIETTI MICHELE

SERVIZIO CONTABILITA'
FRUENDI SIMONA

HUMAN RESOURCES: HOW ARE WE?



152 EMPLOYEES STAFF

**80 OF
III AREA**

**60 OF
II AREA**

**2
OF I AREA**

HUMAN RESOURCES : CONTROL ACTIVITIES

**40,85% OF STAFF EMPLOYED
IN CONTROL ACITIVITIES**

DOGANA

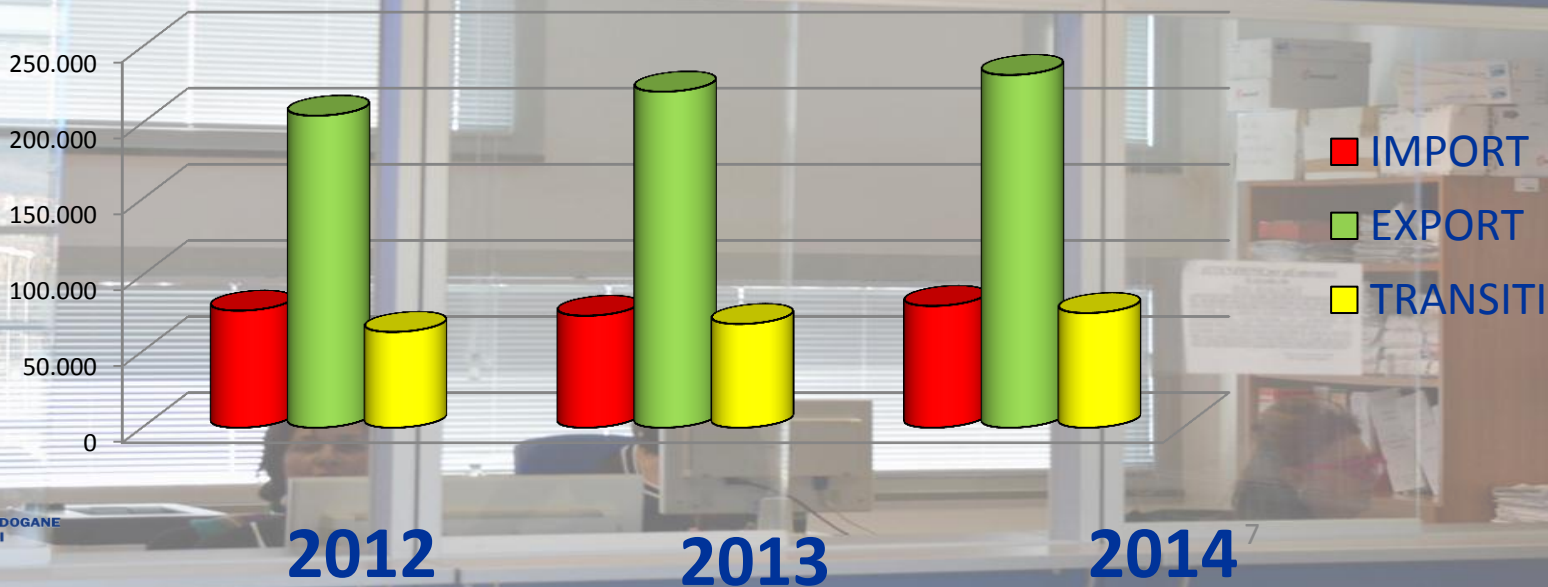
AGENZIA DELLE DOGANE
E DEI MONOPOLI

CUSTOMS DECLARATIONS IN THREE YEARS

2012-2014

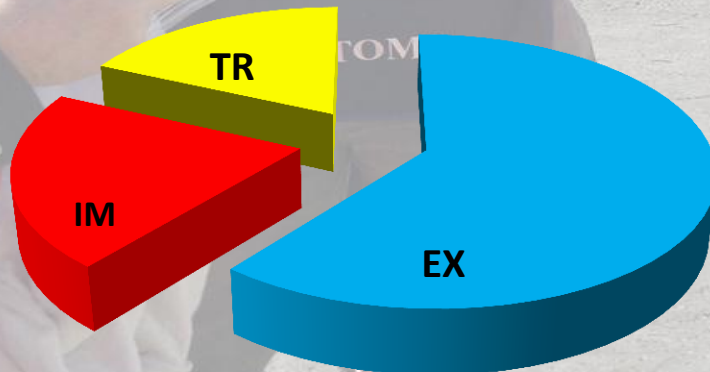


	IMPORT	EXPORT	TRANSIT
2012	76.821	204.906	62.862
2013	73.485	220.662	68.059
2014	79.930	231.644	75.298



CUSTOMS DECLARATIONS IN THE FIRST SIX MONTHS OF 2015

EXPORT	119.759
IMPORT	41.493
TRANSIT	35.786

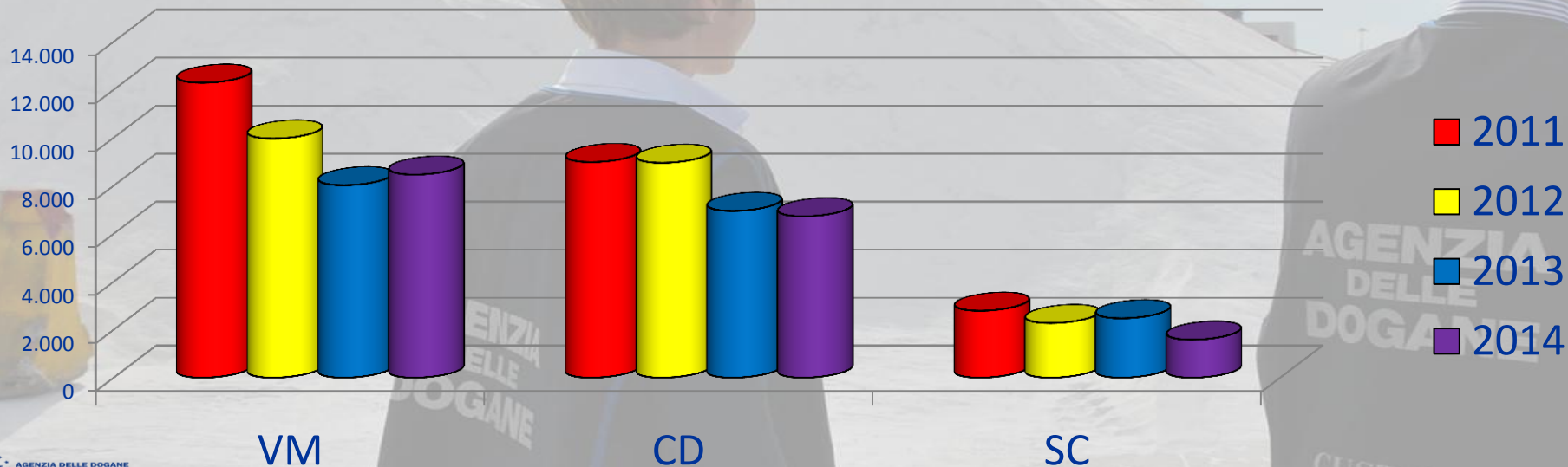


- EXPORT
- IMPORT
- TRANSITI

ITALIAN SYSTEM CUSTOMS CONTROL

CHECKS IN THE LAST FOUR YEARS 2011-2014

	EXAMINING GOODS	VERIFYING DOCUMENTS	X-RAY SCANNER CHECK
2014	8.458	6.719	1.579
2013	8.015	6.946	2.472
2012	9.960	8.950	2.273
2011	12.286	8.981	2.785



CUSTOMS DUTIES COLLECTED IN THREE YEARS 2012-2014

2012

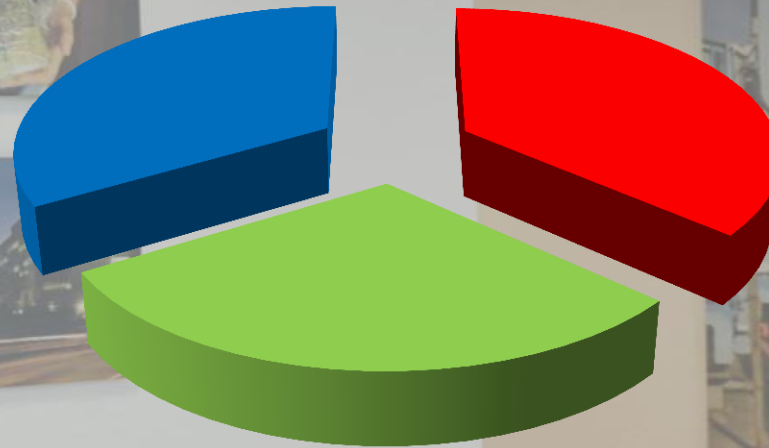
€ 928.110.887

2013

€ 755.696.876

2014

€ 853.576.032



- ANNO 2012
- ANNO 2013
- ANNO 2014

CUSTOMS DUTIES COLLECTED IN THE FIRST SIX MONTHS OF 2015

€ 345.182.501



WHICH SCENARIOS ARE OPENING FOR LA SPEZIA HARBOUR?



SIMPLIFY

INNOVATE



STRENGTHENING INTANGIBLE INFRASTRUCTURES

IMPROVE THE EFFICIENCY OF PORT FACILITIES TO BOOST
PRODUCTIVITY AND COMPETITIVENESS



SINGLE WINDOW



PRE CLEARING



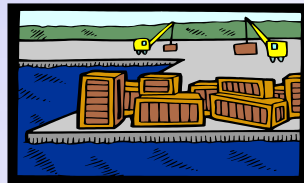
FAST CORRIDOR

PRE CLEARING

60.000 CONTAINER
PRECLEARED THROUGH CUSTOMS FROM THE
BEGINNING OF EXPERIMENTAL PROCEDURE



ROADSTEAD



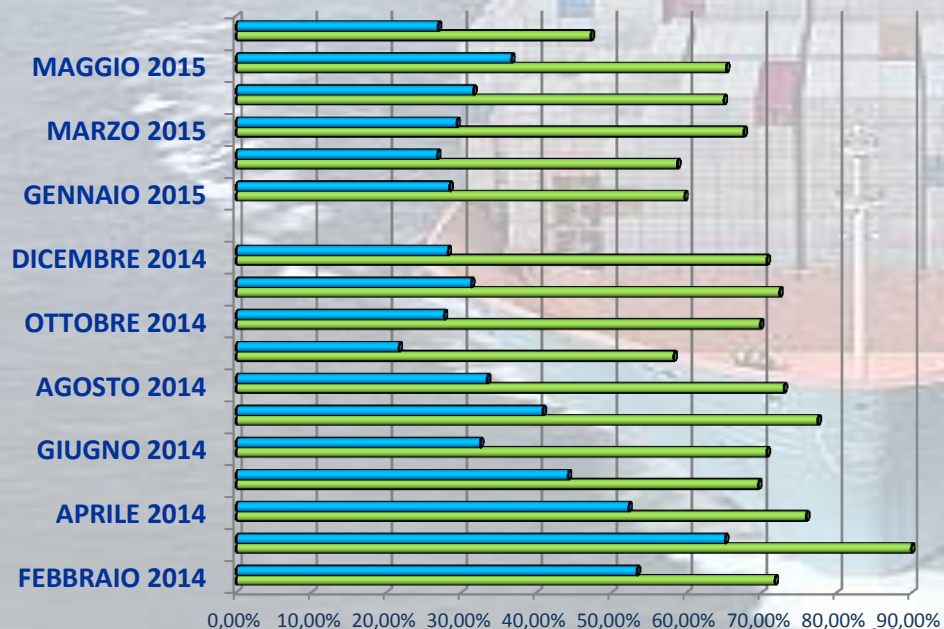
HARBOUR



INNER HARBOUR

STATISTICAL DATA ...

PERCENT OF CONTAINER PRECLEARED THROUGH CUSTOMS FROM THE BEGINNING OF THE EXPERIMENTAL PROCEDURE



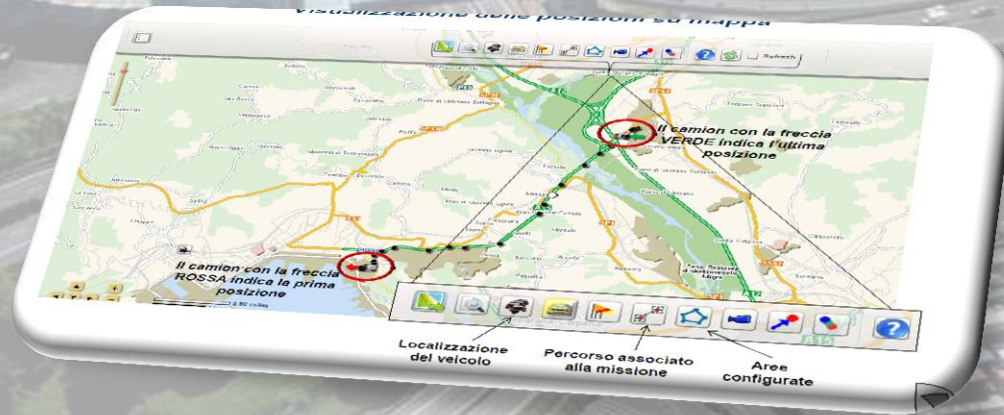
MESE\ANNO	% D.O.	% PRE
FEBBRAIO 2014	71,76%	53,38%
MARZO 2014	89,94%	65,13%
APRILE 2014	75,93%	52,29%
MAGGIO 2014	69,57%	44,23%
GIUGNO 2014	70,67%	32,49%
LUGLIO 2014	77,47%	40,85%
AGOSTO 2014	72,95%	33,45%
SETTEMBRE 2014	58,30%	21,69%
OTTOBRE 2014	69,81%	27,71%
NOVEMBRE 2014	72,39%	31,32%
DICEMBRE 2014	70,68%	28,22%
GENNAIO 2015	59,73%	28,44%
FEBBRAIO 2015	58,75%	26,81%
MARZO 2015	67,62%	29,39%
APRILE 2015	64,97%	31,61%
MAGGIO 2015	65,27%	36,68%
GIUGNO 2015	47,26%	26,89%

■ PRECLEARING
■ DELIVERY ORDER

PRECLEARING ACHIEVEMENTS

1. CERTAINTY IN TIMES GUARANTEED TO THE GOODS;
2. INTERMODAL TRANSPORT AND ROAD TRANSPORT PLANNING;
3. COST SAVINGS DUE TO LOWER DWELL TIMES OF CONTAINERS IN THE HARBOUR;
4. DWELL TIME DECREASED OF 2,5 DAYS.

INNER HARBOUR IN SANTO STEFANO MAGRA



... THE FIRST PROTOTYPE OF ITALIAN FAST CORRIDOR
6 KM FROM LA SPEZIA HARBOUR

A map of Northern Italy showing a corridor from Milan to Bologna. The corridor is highlighted with a blue line, representing both a road and a railroad. Major cities along the route include Milan, Bergamo, Brescia, Mantova, Modena, and Bologna. The map also shows other major cities like Turin, Genoa, and Florence. The text 'A REALLY LONG PLATFORM...' is overlaid on the top part of the map.

A REALLY LONG PLATFORM...

...FAST CORRIDOR IMPACT

- ROAD AND RAILROAD -



INSTITUTIONAL ACTORS INVOLVED

CUSTOMS

**AUTHORIZE THE TRANSFER OF GOODS FROM LA SPEZIA
HARBOUR UP TO CUSTOMS WAREHOUSE**

WITHOUT ANY CUSTOMS FORMALITIES



OTHERS ACTORS INVOLVED ...

... SHIPPING AGENT AND THE ARRIVAL OF GOODS

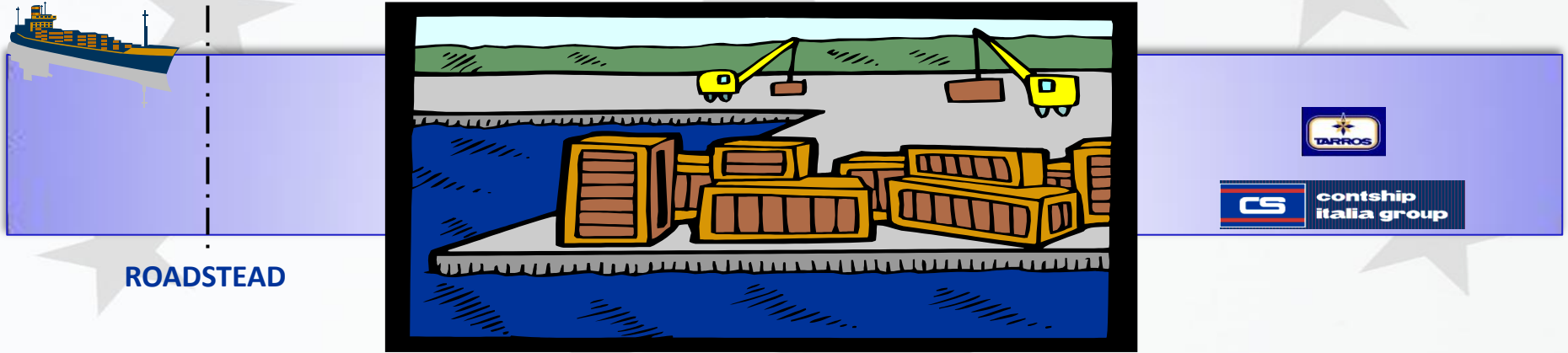


RADA

DOGANA DI LA SPEZIA						Manifesto delle merci arrivate								Mod.A - N44 Dogane (ex A42)					
Presentato il _____ alle ore _____						con (1) _____ M/Nave _____ denominata _____ HEPAT _____ di bandiera _____ MALTA													
ed accertata la concordanza col manifesto di bordo						della portata di tonnellate _____ 768 _____, con _____ 10 _____ persone di equipaggio, comandata dal capitano _____ NIHAT ANGIN													
venire allegato a i N. _____ del registro di carico A 2						proveniente da _____ Costantana _____													
(manifesto merci arrivate) serie _____						avendo fatto scalo a _____													
IL _____						è arrivata a _____ GENOVA _____ il _____ 12/02/2007 _____ alle ore _____ 12.00													
						(1) Specie della nave _____													
ANNOTAZIONI DEL CAPITANO										ANNOTAZIONI DELLA DOGANA									
N. ordine partita	Luogo d'imbarco	Marche	COLLI			MERCI			Destinazione ed indicazione dei destinatari per ogni destinazione	DICHIARAZIONI PRESENTATE				Registre di esercizio abilitamento e validità di esito				OSSERVAZIONI	
			Numero distintivi	Qualità	Quantità	Indicazioni scritte sulla qualità	QUANTITÀ*			Dichiarate	Specie	Data della presentazione	Quantità dei colli o merci	Specie	Stato	Numero	Data		
Merce in sbarco																			
					1000	Vergella o bastione	EG	2.300,000,	Ortona										
					1000	Vergella o bastione	EG	2.300,000,	Ortona										
GENERI IN CONSEGNA AL COMANDANTE																			
					2000	SIGARETTE	HR	0,000											
RIMANENZE MACCHINA																			
					0	OLIO LUBRIFICA	LT	1.200,000											
					0	GASOIL	EG	20.000,00											

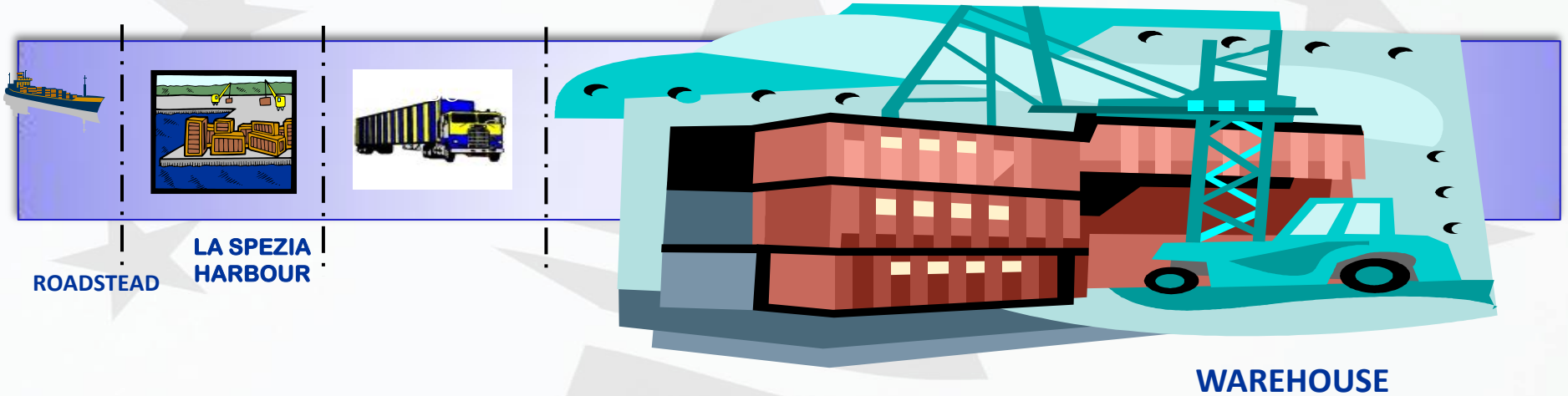
THE RESPONSIBLE OF CARGO MANIFEST, BEFORE THE ARRIVAL OF THE SHIP, ELECTRONICALLY SEND A LIST OF THE GOODS, INDICATING THE CODE OF CUSTOMS WAREHOUSE OF DESTINATION.

OTHERS ACTORS INVOLVED ... TERMINAL OPERATOR



**THIS PROCEDURE IS APPLICABLE TO THE GOODS LANDED IN THE
TERMINAL OF LA SPEZIA HARBOUR**

OTHERS ACTORS INVOLVED ... MANAGERS OF STORES OF TEMPORARY CUSTODY



THE GOODS SO DECLARED, IN LA SPEZIA CUSTOMS OFFICE, TAKE ON THE STATE OF GOODS FILED IN WAREHOUSE OF DESTINATION. THE MANAGER OF THE WAREHOUSE IS LIABLE FOR PAYMENT OF THE CUSTOMS DEBT IN RESPECT OF THAT GOODS.

EXCEPTIONS...

... SAFETY AND SECURITY CHECKS

THE GOODS REPORTED FOR THIS KIND OF CHECKS SHOULD BE CONTROLLED BY LA SPEZIA CUSTOMS OFFICE BEFORE TO LEAVE THE CUSTOMS AREA.



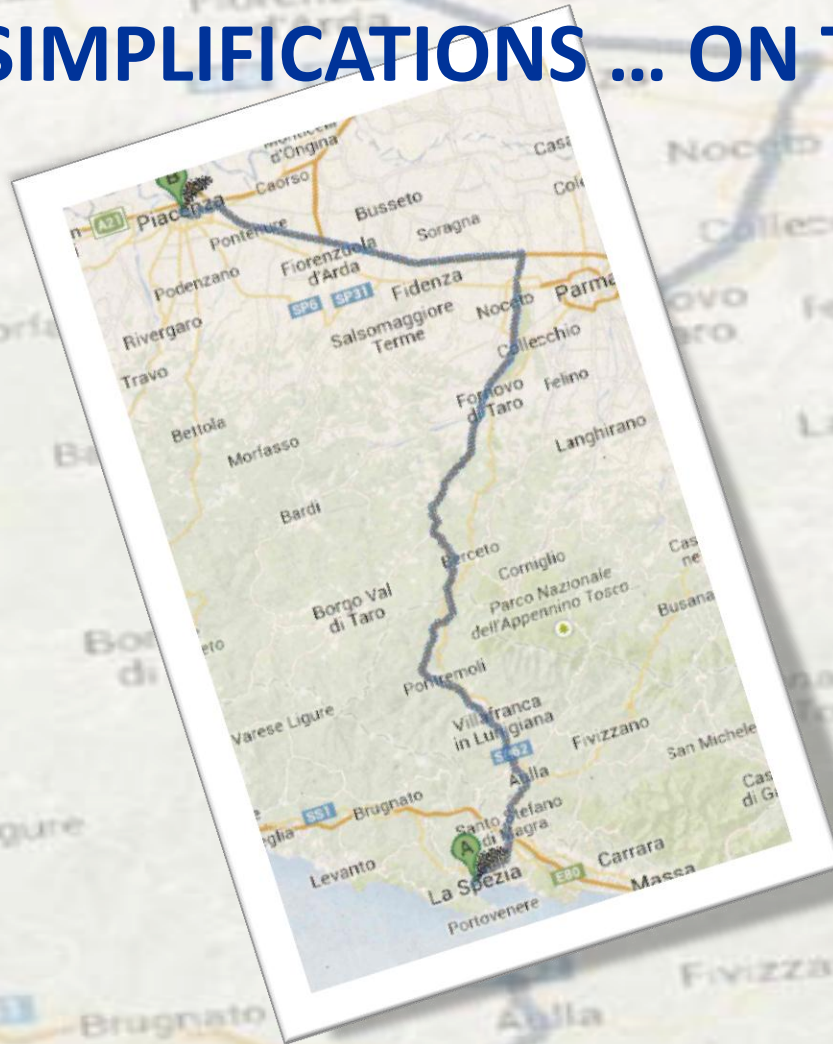
ANTIFRAUD OFFICE CHECKS

THE RISK ANALYSIS UNIT OF THE LOCAL ANTIFRAUD OFFICE CAN SELECT GOODS TO INSPECT



163 KM OF SIMPLIFICATIONS ... ON THE ROAD

PIACENZA



LA SPEZIA

INSTITUTIONAL ACTORS INVOLVED

ITALIAN LOGISTICS PLATFORM AND MONITORING OF GOODS



THE COOPERATION BETWEEN ITALIAN CUSTOMS AND UIRNET HAS THE PURPOSE TO ESTABLISH A NETWORK CONTROL IN REAL-TIME, TO MONITOR THE MOVEMENT OF GOODS, IN ORDER TO EXTEND THE PLATFORM UP TO KNOT LOGISTICS OF DESTINATION .

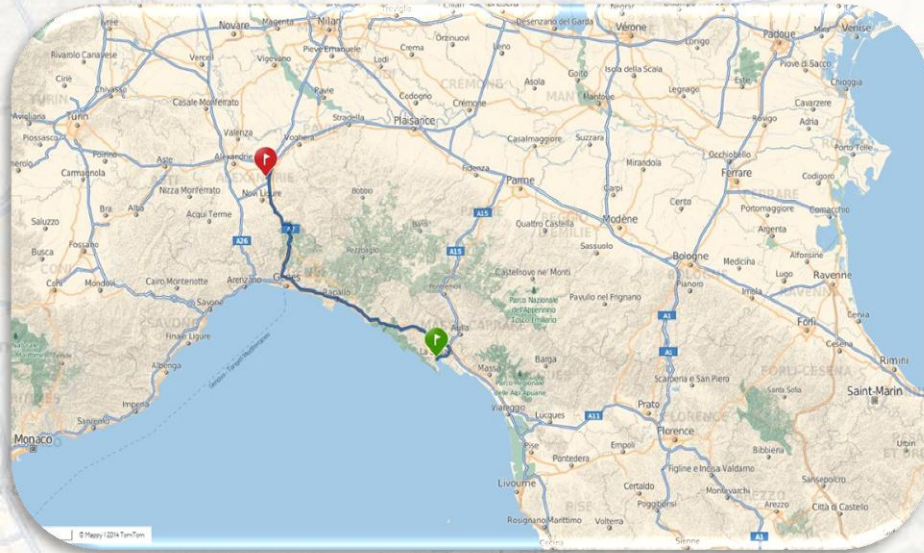
NATIONAL PLAN OF ACTION ABOUT ITS – INTELLIGENT TRANSPORT SYSTEM



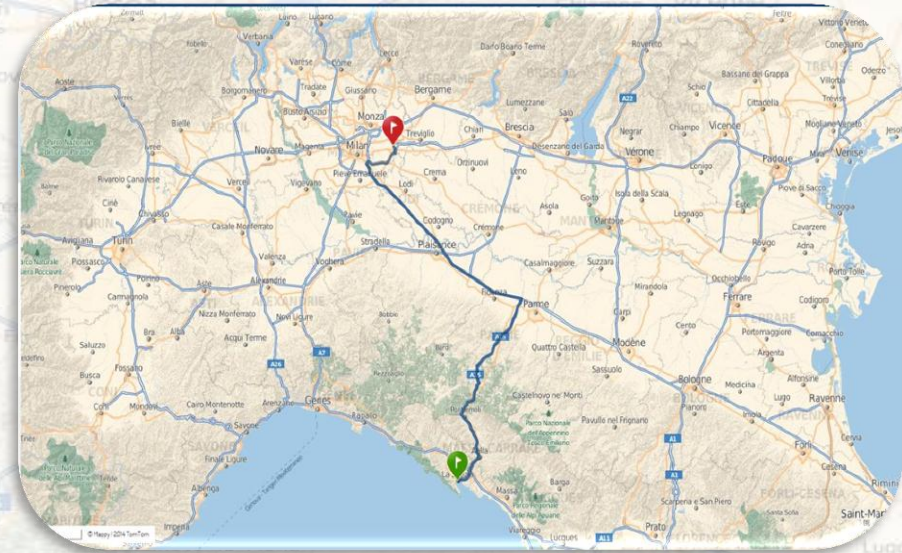
**THIS PROCEDURE IS APPLICABLE ONLY FOR GOODS HAULED ON TRUCK EQUIPPED WITH OBU,
ON BOARD UNIT: GPS SYSTEM TO MONITORING.**

FAST CORRIDOR ON RAILWAY

LA SPEZIA – RIVALTA SCRIVIA



LA SPEZIA – MELZO



FAST CORRIDOR IMPACT

SAVINGS IN TERMS OF...



CUSTOMS FORMALITIES



TIME



SPACE



MONEY



AGENZIA DELLE DOGANE
E DEI MONOPOLI

OTHER BENEFITS OF SIMPLIFICATION

OPPORTUNITIES FOR COMPANIES TO INTEGRATE THE CUSTOMS COMPLIANCE WITH ITS LOGISTICS PROCEDURES



SCANNING PROCESS
(INTERNET LOGISTICS)



MORE SAFETY



A 3D rendering of a globe with a grid of latitude and longitude lines. The globe is tilted and surrounded by a variety of national flags, including the United States, United Kingdom, Canada, and others, arranged in a circular pattern around the globe. The flags are semi-transparent and overlap each other.

THANKS FOR THE ATTENTION