



# *akie*m

Building your traction solutions





**akiem**

Who are we?



- Our job : *Locomotives leasing, and providing associated services.*  
Akiem offers a large range of locomotives to the European railway operators  
Leasing can be supplemented by tailor made services , from Dry Lease to Full Service
- Our commitment : *Building you traction solutions*  
Accompany you in your business development  
Support you in the implementation of your operation and maintenance organization



### History

Created at the end of 2008, Akiem is one of the first French rolling stock companies

100% subsidiary of the Transport & Logistics pole, from the [SNCF GEODIS](#) Branch

Akiem is a light structure relying on the expertise and the know-how of the Group

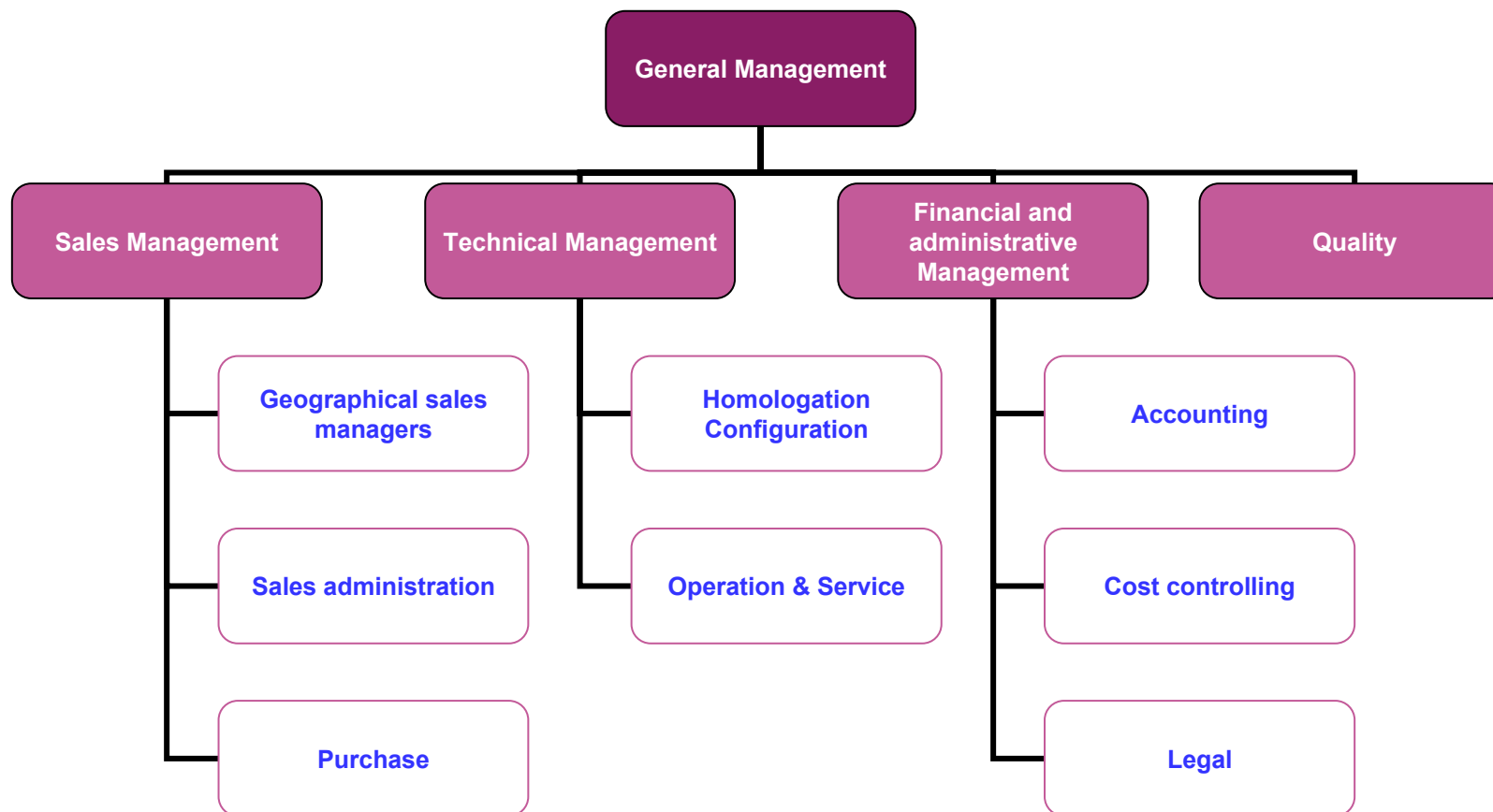
2010 marks the beginning of the diversification of the activity beside European private actors

### Environment

Akiem's creation occurs in a specific context in Europe :

- Liberalization of the railway freight market
- Emergence of new needs for traction rolling stock (renewal of fleet, interoperability,...)
- Optimization of the economical model of the railway operators

# Our Organization



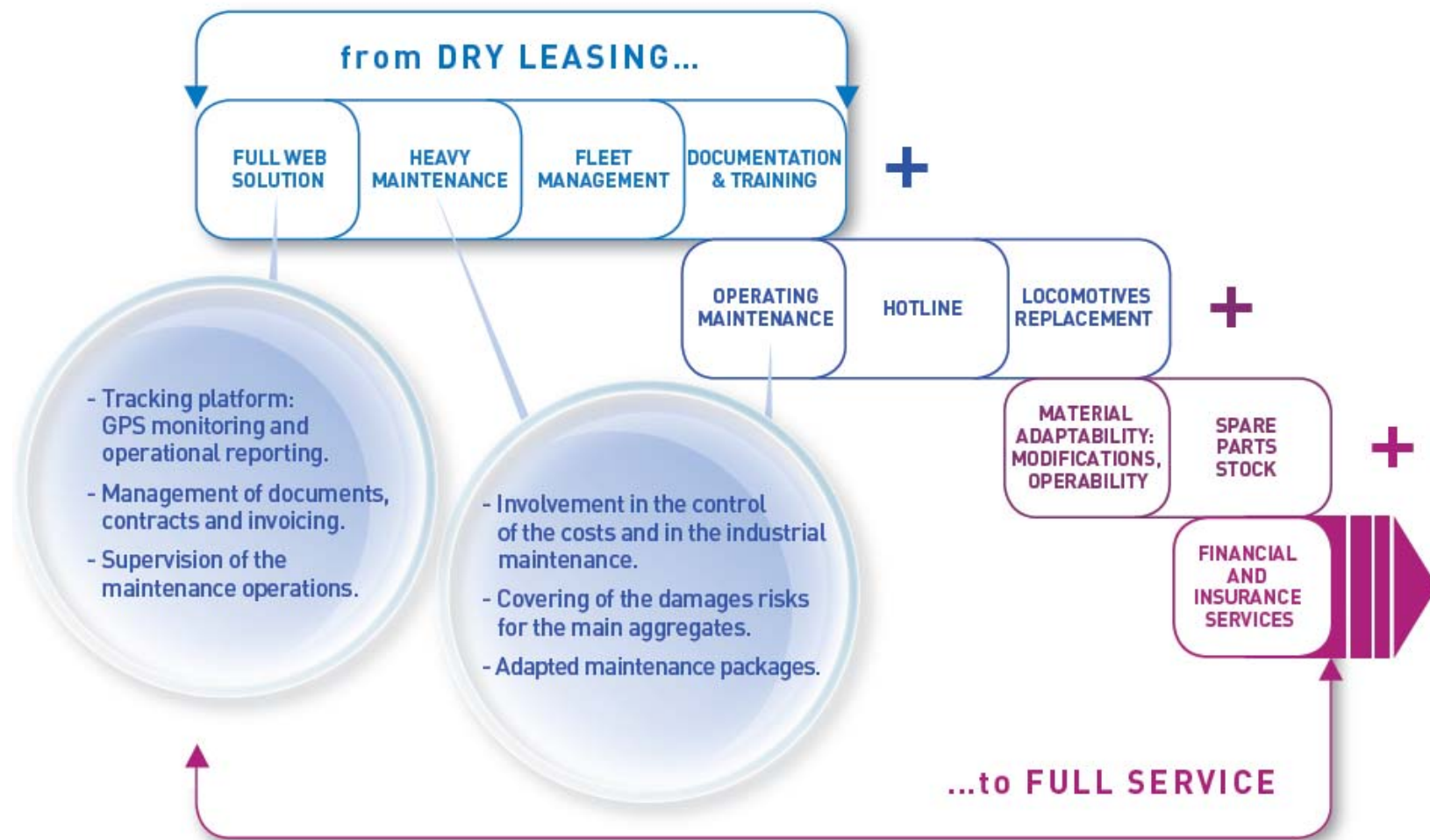
**Akiem offers :**

The different services linked to the delivery of locomotives to the railway undertakings cover the whole range from financial leasing to a full service including maintenance, management, and operational reserve.

**Akiem addresses to:**

- **Railway undertakings**
- **Local railway operators**
- **Industrial and port operators**
- **Railway infrastructure undertakings**

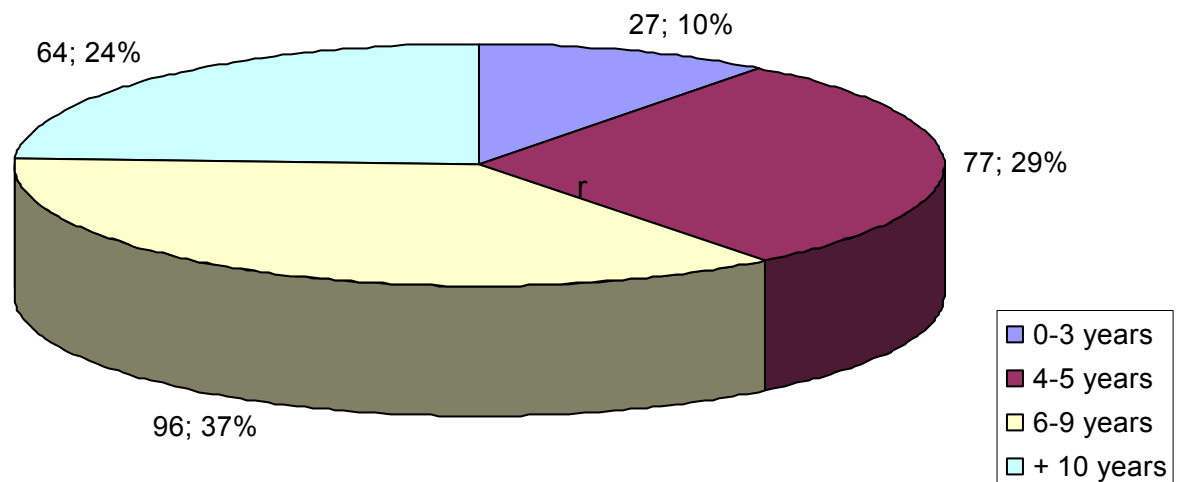
Our service



Development strategy

- Homologation extension program for existing rolling stock
- Purchase for specific markets
- Carry of full former Veolia Cargo fleet (full property) following the purchase by [SNCF GEODIS](#)
- Development of partnerships with other European ROSCOs

Akiem's fleet age  
31/03/2011



## Diesel fleet




Class	Manufacturer	Homologation	Number	
BB75000 (Prima DE)	Alstom-Siemens	F F-D-SK	40 10	CZ authorization ongoing
Y8000	Fauvet-Girel	F (I)	37	+37 to be delivered
BB400	Gemafer	F	12	+5 to be delivered
G1000	Vossloh	I	5	
G1206	Vossloh	F-D D-NL	3 1	+6 to be ordered
Class 77	EMD	F-B-D	7	
<b>TOTAL AKIEM's Diesel fleet, 01/09/2011</b>			<b>115</b>	





## Electric fleet



Class	Manufacturer	Homologation	Number
	Alstom	F	70
		F-D F-D-CH	36 32
	Bombardier	D-B-F	3
		D-A	3
	Alstom	F-B	30
		<b>TOTAL AKIEM's electric fleet, 01/09/2011</b>	<b>174</b>



### Our customers

- Agence d'Essai Ferroviaire
- Alstom
- Bombardier
- Bratislava Rail
- Captrain
- Euro Cargo Rail
- Europorte
- Fret SNCF
- HSL Logistik
- ITL
- VFLI

### Our partners

- Alstom
- Bombardier
- Electro Motive Diesel
- EMSI
- Gemafer
- Masteris
- Vossloh locomotives