



# Combined transport Scandinavia ↔ Italy

Claus Lynge Christensen  
Line Manager Skandinavia

Aelmhult, 03.09.2009

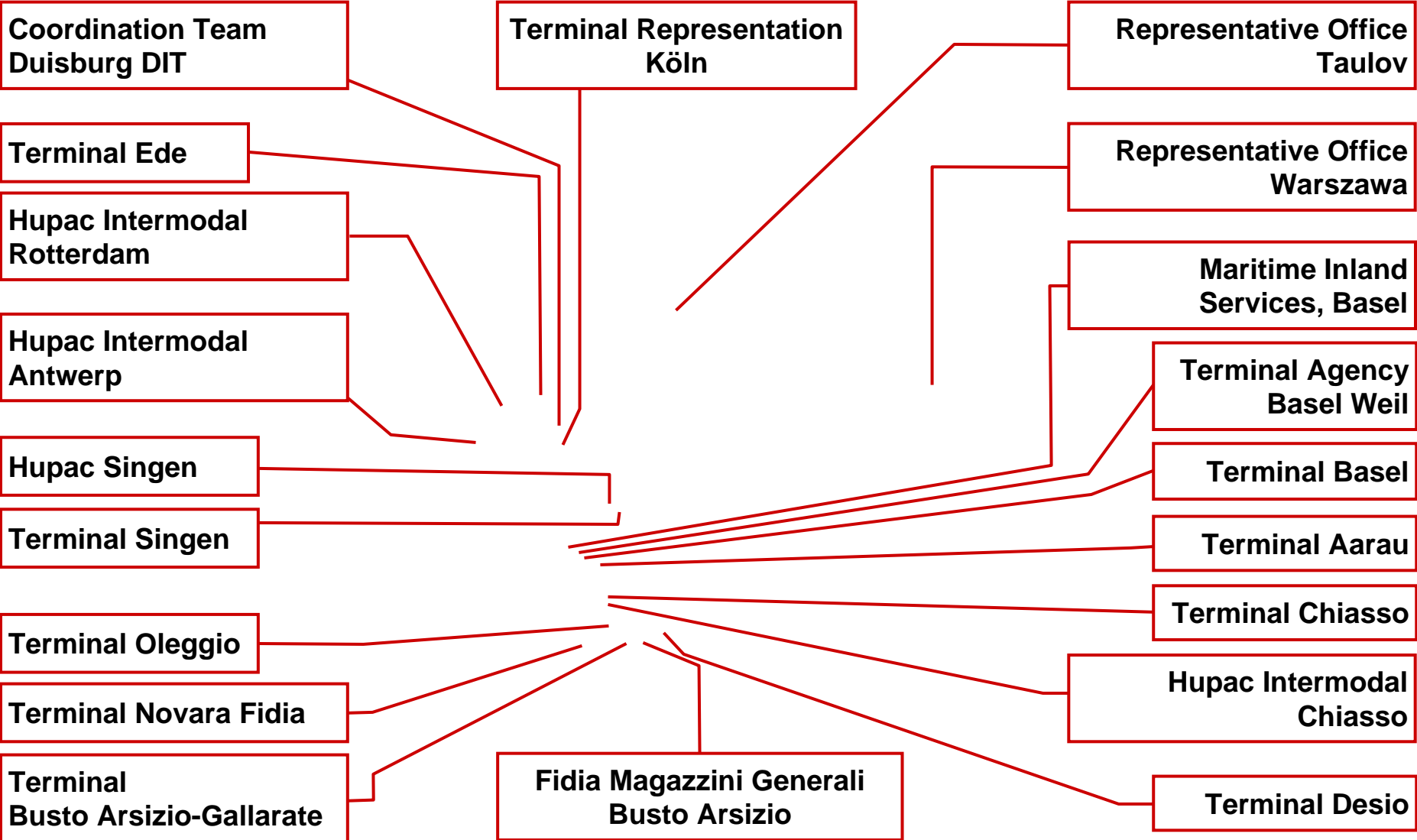




## Facts & figures

<b>Foundation</b>	<b>1967</b>
<b>Share capital</b>	<b>CHF 20 million</b>
<b>Shareholders</b>	<b>100</b>
<b>Capital structure</b>	<b>72% transport and logistics companies 28% rail companies</b>
<b>Employees</b>	<b>439</b>
<b>Traffic 2008</b>	<b>110 trains per day 702,000 road consignments – 12.4 million net tons</b>
<b>Ressources</b>	<b>6,087 wagon modules 13 main-line and/or shunting locomotives 9 own managed terminals IT systems for intermodal transport</b>
<b>Financial data 2008</b>	<b>Turnover CHF 588.2 million (EUR 370.7 million) Profit for the year CHF 2.8 million (EUR 1.8 million) Cash flow CHF 33.9 million (EUR 21.4 million)</b>

# Hupac: close to our customers





**Transportation volumes 2008:  
702,000 road consignments**

## **Shuttle Net**

- 108 shuttle trains per day
- 685,780 road consignments
- 12.1 million net tonnes

## **Rolling Highway**

- 2 trains per day
- 16,528 road consignments
- 0.3 million net tonnes

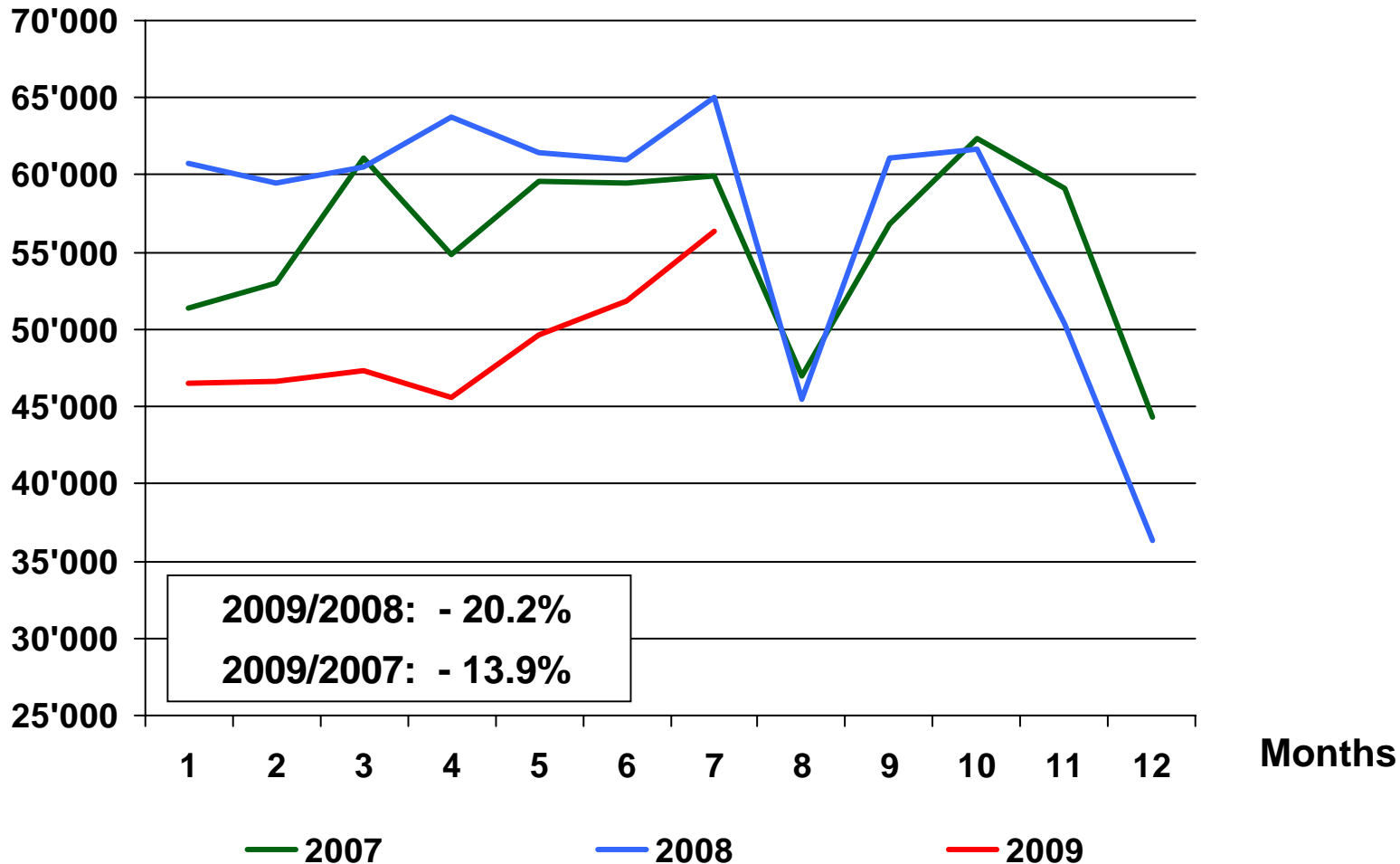
## **Scandinavia ↔ Italy**

- 8 trains per day
- 30,000 road consignments

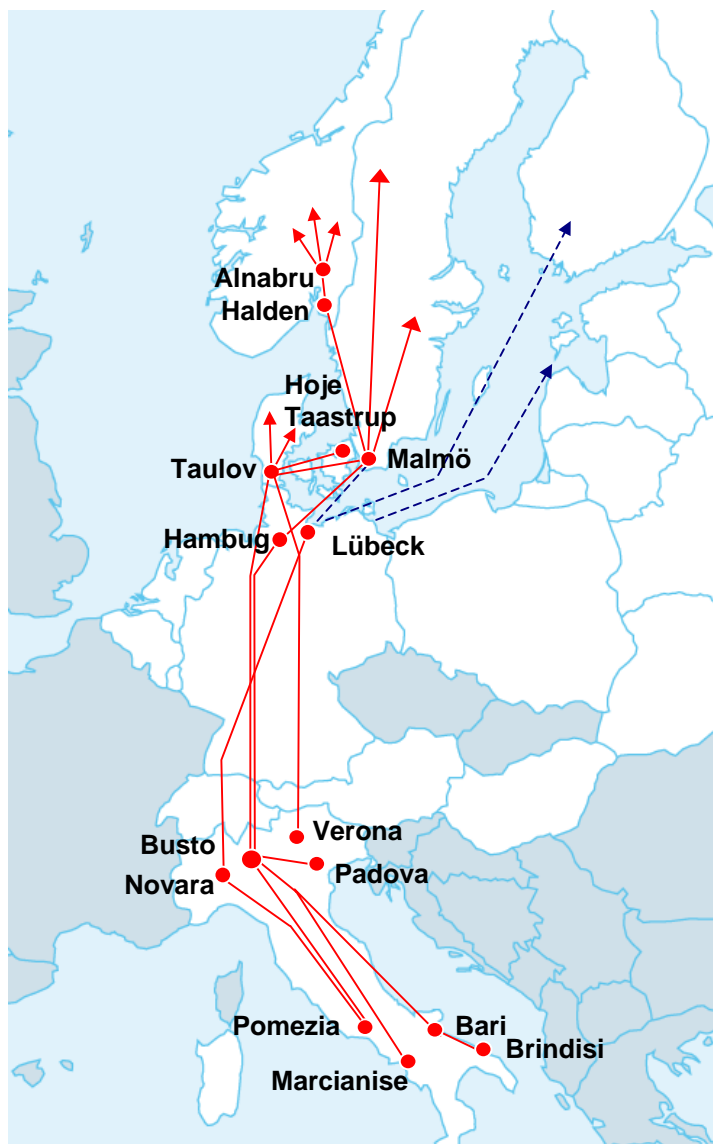
# Traffic volumes of Shuttle Net



## Road consignments



# Network Italy-Scandinavia – August 2009



	Shuttle/week
Busto Arsizio ⇄ Taulov	22
Taulov ⇄ Malmö	12
Taulov ⇄ Hoje Taastrup	10
Malmö ⇄ Netwok CargoNet	daily
Malmö ⇄ Hamburg with Kombi	6
Novara ⇄ Lübeck SK (4 m)	6
Taulov ⇄ Verona	8
Busto Arsizio ⇄ Hamburg	12

# Taulov intermodal terminal





**Thank you for your attention.**

**HUPAC**